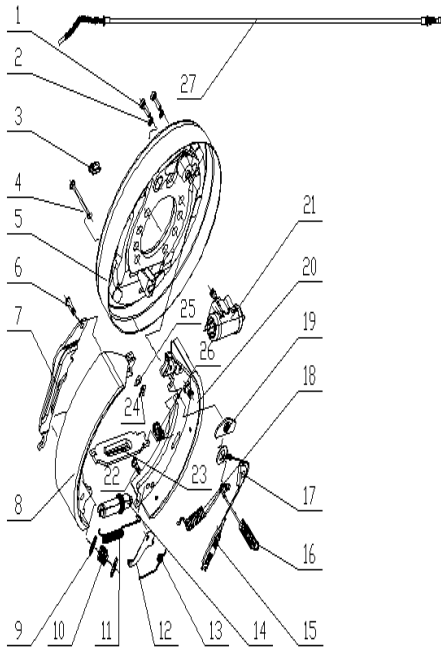
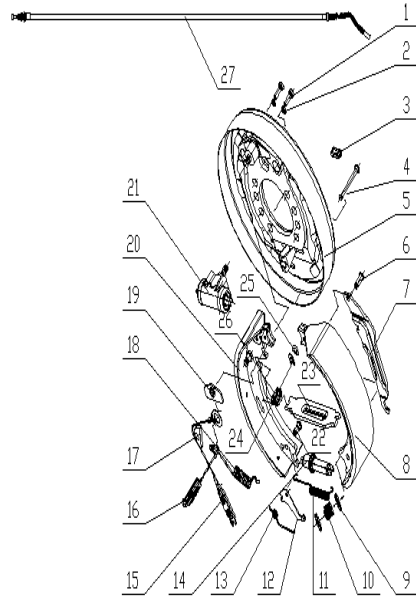


253698501005左制动器/LIFT LEFT BRAKE



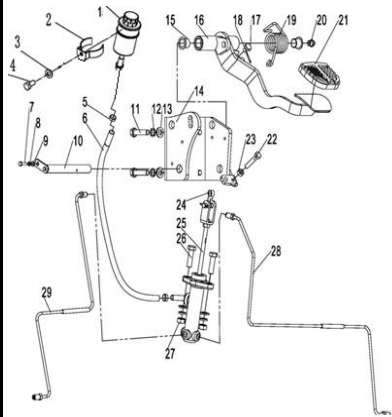
序号/NO	编码/SN	名称	Name	数量/QTY	备注/Remark
A	253698523527	左制动器总成AQ-HK2S3-00401	Left brake assy AQ-HK2S3-00401	1	
1	253698523560	螺栓GB21-76	BoitGB21-76	2	
2	253698523561	弹簧垫圈GB91-76	Washer GB91-76	2	
3	253698523562	胶堵24433-70040G	Glue plug 24433-70040G	2	
4	253698523563	压簧拉杆24433-70010G	Spring pull rod 24433-70010G	2	
5	253698523564	左制动器底板总成HK2S3-00411L	Left brake base plate assy HK2S3-00411L	1	
6	253698523565	手拉杆销24433-70150G	Hand tie rod Pin 24433-70150G	1	
7	253698523566	左手制动拉杆24433-70140G-L	Left hand brake pull rod 24433-70140G-L	1	
8	253698523567	制动蹄带摩擦片总成23653-73021TC	Brake Shoe with Friction Plate Assembly 23653-73021TC	1	
9	253698523568	压簧座24433-70020G	Press spring seat 24433-70020G	4	
10	253698523569	压簧24433-70030G	Press spring 24433-70030G	2	
11	253698523570	拉簧24433-70050G	Tension spring 24433-70050G	1	
12	253698523571	左棘爪24433-70100G-L	Left pawl 24433-70100G-L	1	
13	253698523572	左扭簧24433-70090G-L	Left torsion spring 24433-70090G-L	1	
14	253698523573	左间隙调整器总成24433-74000G-L	Left Clearance Regulator Assembly 24433-74000G-L	1	
15	253698523574	弹簧拉线装置24433-73000G	Spring pulling device 24433-73000G	1	
16	253698523575	左回位弹簧(后)24433-70071G-L	Left return spring (rear) 24433-70071G-L	1	
17	253698523576	导向块24433-70081G	Guide block 24433-70081G	1	
18	253698523577	左回位弹簧(前)24433-70070G-L	Left return spring (front) 24433-70070G-L	1	
19	253698523578	导向板24433-70060G	Guide plate 24433-70060G	1	
20	253698523579	左制动蹄带摩擦片及挂簧销总成24433-71001G-L	Left brake shoe with friction plate and spring pin assembly 24433-71001G-L	1	
21	253698523580	制动分泵总成22673-72041	Brake sub Pump Assembly 22673-72041	1	
22	253698523581	棘爪销钉24433-70110G	Pawl Pin 24433-70110G	1	
23	253698523582	左手制动推杆24433-70120G-L	Left hand brake push lever 24433-70120G-L	1	
24	253698523583	杆销挡圈24433-70170G	Rod pin retaining ring 24433-70170G	1	
25	253698523584	弹性垫片24433-70160G	Elastic gasket 24433-70160G	1	
26	253698523585	弹簧24433-70130G	Spring 24433-70130G	1	
27	253698523586	制动钢索总成(左)OC11246-14603	Brake Cable Assy (left)OC11246-14603	1	

253698501006右制动器/LIGHT LEFT BRAKE



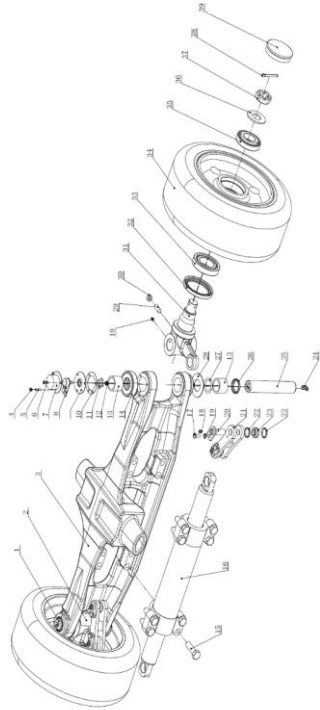
序号/NO	编码/SN	名称	Name	数量/QTY	备注/Remark
A	253698523530	右制动器总成AQ-HK2S3-00501	Light brake assy AQ-HK2S3-00501	1	
1	253698523560	螺栓GB21-76	BoitGB21-76	2	
2	253698523561	弹簧垫圈GB91-76	Washer GB91-76	2	
3	253698523562	胶堵24433-70040G	Glue plug 24433-70040G	2	
4	253698523563	压簧拉杆24433-70010G	Spring pull rod 24433-70010G	2	
5	253698523590	右制动器底板总成HK2S3-00411R	Light brake base plate assy HK2S3-00411R	1	
6	253698523565	手拉杆销24433-70150G	Hand tie rod Pin 24433-70150G	1	
7	253698523591	右手制动拉杆24433-70140G-R	Light hand brake pull rod 24433-70140G-R	1	
8	253698523567	制动蹄带摩擦片总成23653-73021TC	Brake Shoe with Friction Plate Assembly 23653-73021TC	1	
9	253698523568	压簧座24433-70020G	Press spring seat 24433-70020G	4	
10	253698523569	压簧24433-70030G	Press spring 24433-70030G	2	
11	253698523570	拉簧24433-70050G	Tension spring 24433-70050G	1	
12	253698523592	右棘爪24433-70100G-R	Light pawl 24433-70100G-R	1	
13	253698523593	右扭簧24433-70090G-R	Light torsion spring 24433-70090G-R	1	
14	253698523594	右间隙调整器总成24433-74000G-R	Ligh Clearance Regulator Assembly 24433-74000G-R	1	
15	253698523574	弹簧拉线装置24433-73000G	Spring pulling device 24433-73000G	1	
16	253698523595	右回位弹簧(后)24433-70071G-R	Light return spring (rear) 24433-70071G-R	1	
17	253698523576	导向块24433-70081G	Guide block 24433-70081G	1	
18	253698523596	右回位弹簧(前)24433-70070G-R	Light return spring (front) 24433-70070G-R	1	
19	253698523578	导向板24433-70060G	Guide plate 24433-70060G	1	
20	253698523597	右制动蹄带摩擦片及挂簧销总成24433-71001G-R	Light brake shoe with friction plate and spring pin assembly 24433-71001G-R	1	
21	253698523580	制动分泵总成22673-72031	Brake sub Pump Assembly 22673-72041	1	
22	253698523581	销钉24433-70110G	Pawl Pin 24433-70110G	1	
23	253698523598	右手制动推杆24433-70120G-R	Light hand brake push lever 24433-70120G-R	1	
24	253698523583	杆销挡圈24433-70170G	Rod pin retaining ring 24433-70170G	1	
25	253698523584	弹性垫片24433-70160G	Elastic gasket 24433-70160G	1	
26	253698523585	弹簧24433-70130G	Spring 24433-70130G	1	
27	253698523586	制动钢索总成(右)OC11246-24603	Brake Cable Assy (left)OC11246-14603	1	

253698501009 行车制动安装/DRIVING BRAKING INSTALLATION



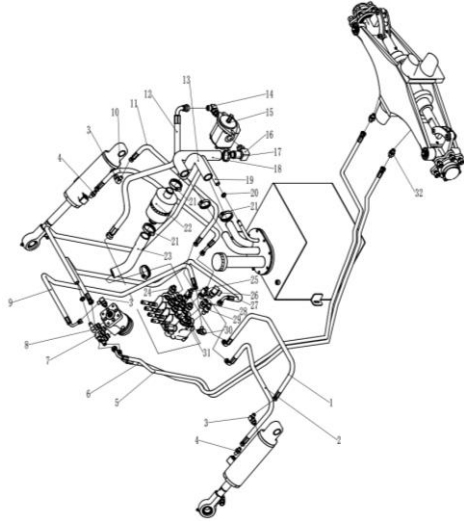
序号/NO	编码/SN	名称	Name	数量/QTY	备注/Remark
1	275011520020	油杯	Grease nipple	1	
2	256811511020	油杯固定环	Bracket	1	
3	910400500007	弹簧垫圈GB93-8	Washer GB93-8	1	
4	910100300020	螺栓GB5783-M8x16-8.8	Bolt GB5783-M8x16-8.8	1	
5	911000600001	喉箍QC/T390-(11-14)	Hose clamp QC/T390-(11-14)	2	
6	255011520021	连接管	Connecting pipe	1	
7	910100300003	螺栓GB5783-M5x12-8.8	Bolt GB5783-M5x12-8.8	1	
8	910400500004	弹簧垫圈GB93-5	Washer GB93-5	1	
9	910400100004	平垫圈GB97.1-5-200HV	Washer GB97.1-5-200HV	1	
10	255011510003	带耳轴Φ16x135	Axle Φ16x135	1	
11	910100300039	螺栓GB5783-M10x40-8.8	Bolt GB5783-M10x40-8.8	4	
12	910400500007	弹簧垫圈GB93-10	Washer GB93-10	6	
13	910400100007	平垫圈GB97.1-10-200HV	Washer GB97.1-10-200HV	6	
14	256811511004	脚制动支架焊合	Foot brake holder welding	1	
15	940500100006	复合套Φ16xΦ18x15-SF-1	Bushing Φ16xΦ18x15-SF-1	2	
16	256811511002	踏板焊合	Pedal weiding	1	
17	255011520010	缓冲垫	Damping pad	1	
18	910600600015	开口销GB91-2x20	Split pin GB91-2x20	1	
19	255011520008	扭簧	Spring	1	
20	911200100004	油杯JB7940.1-M10x1	Grease nipple JB7940.1-M10x1	1	
21	255011520013	踏板(橡胶)	Pedal (rubber)	1	
22	910100100023	螺栓GB5782-M8x45-8.8	Bolt GB5782-M8x45-8.8	1	
23	910300100006	螺母GB6170-M8-10	Nut GB6170-M8-10	1	
24	940500100048	复合套Φ10xΦ12x8-SF-1	Bushing Φ10xΦ12x8-SF-1	1	
25	256811510001	制动泵总成	Brake pump assembly	1	
26	910100300038	螺栓GB5783-M10x35-8.8	Bolt GB5783-M10x35-8.8	2	
27	910300100007	螺母GB6170-M10-10	NutGB6170-M10-10	2	
28	253611511009	右制动钢管	Brake steel pipe welding	1	
29	253611511010	左制动钢管	Brake steel pipe welding	1	

253698501012转向桥及安装/STEERING BRIDGE AND INSTALLATION



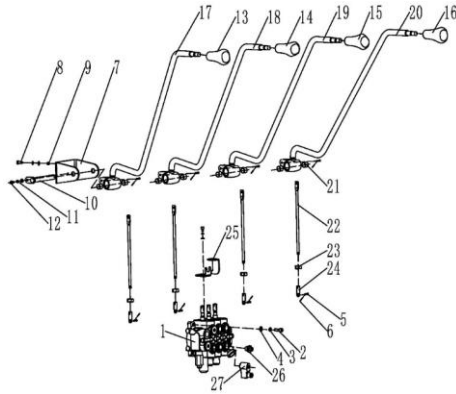
序号/NO	编码/SN	名称	Name	数量/QTY	备注/Remark
A	253616011001	转向桥(实心胎)	Steering axle (solid tire)	1	无花纹
A	253616012001	转向桥(环保胎)	Steering axle (Environment-friendly tire)	1	选装
1	253698526001	主销A73J4-32111	Kingpin A73J4-32111	1	
2	253698526002	左转向节总成AE774-32021	Left turn to joint assy AE774-32021	1	
3	253698526003	转向桥体总成A7V94-10202	Steering bridge is A7V94-10202	1	
4	253698526004	螺母M5-B4133-00005B	Nut M5-B4133-00005B	1	
5	253698526005	内六角平端紧定螺钉B9997-05020B	Scerw B9997-05020B	1	
6	253698526006	内六角圆柱头螺钉M5x12-B8030-05012B	Scerw M5x12-B8030-05012B	2	
7	253698526007	保护盖A7V94-32121	Protection cover A7V94-32121	1	
8	253698526008	转角定位器A7V94-10203	Angle locator A7V94-10203	1	
9	253698526009	主销上盖A7V94-32131B	Kingpin top cover A7V94-32131B	1	
10	253698526010	密封垫圈A7V94-10200	Seal washer A7V94-10200	1	
11	253698526011	十字D板A7V94-10201B	Cross D plate A7V94-10201B	1	
12	253698526012	螺钉M10x8-B8330-10008	Screw M10x8-B8330-10008	1	
13	253698526013	滚针轴承Φ32×Φ40×32-Z-943/32	Bearing Φ32×Φ40×32-Z-943/32	4	
14	253698526014	单向推力球轴承Z-198908P	Bearing Z-198908P	2	
15	253698526015	六角螺栓M16×50-293686	Bolt M16×50-293686	8	
16	253698526016	转向油缸总成A7V94-30201	Steering Cylinder Assy A7V94-30201	1	
17	253698526017	螺栓M8X16-B0330-08016B	Bolt M8X16-B0330-08016B	4	
18	253698526018	直通式油嘴M6-Q700B06	Straight through nozzle M6-Q700B06	5	
19	253698526019	弹垫8-B5050-00008B	Spring washer 8-B5050-00008B	4	
20	253698526020	连杆销25RC4180000B	Connecting rod Pin 25RC4180000B	4	
21	253698526021	连杆AE774-32011B	Connecting rod AE774-32011B	2	
22	253698526022	衬套H24C4-12003	Bush H24C4-12003	6	
23	253698526023	向心关节轴承Z-GE16ES	Radial joint bearing Z-GE16ES	4	
24	253698526024	90°弯颈式滑脂嘴Q701B90	90° bent neck grease nozzle Q701B90	3	
25	253698526025	主销/右A7T74-33011	Kingpin/right A7T74-33011	1	
26	253698526026	铁壳油封23654-32081	Iron case oil seal 23654-32081	3	
27	253698526027	O型圈23654-32161	O-ring 23654-32161	2	
28	253698526028	转向节调整垫22214-30321	Knuckle adjustment pad 22214-30321	4	
29	253698526029	内六角锥端紧定螺钉M12×30-B8050-12030B	Screw M12×30-B8050-12030B	2	

253698501019 液压系统/HYDRAULIC



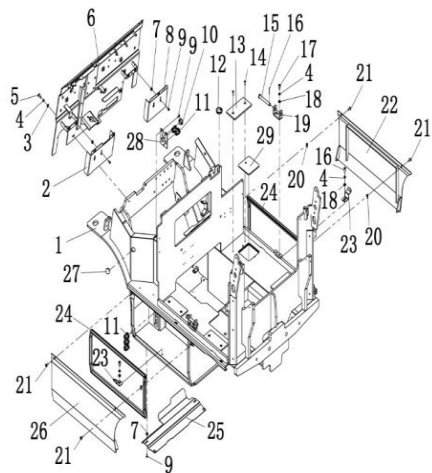
序号/NO	编码/SN	名称	Name	数量/QTY	备注/Remark
1	253623521008	液压管总成(90°)8-L800-1SC-24°	Hydraulic Tube Assembly (90°)8-L800-1SC-24°	1	
2	253623521007	液压管总成(直)8-L650-1SC-24°	Hydraulic Tube Assembly 8-L650-1SC-24°	1	
3	251223510003	接头(锁定弯)6-G1/4-M14x1.5-24°	Connector (lock bend)6-G1/4 M14X1.5-24 °	2	
4	251223520007	接头(直)6-G1/4-M14x1.5-24°	Connector (straight)6-G1/4 M14X1.5-24 °	2	
5	253623521005	液压管总成(90°)10-L2300-1SC-24°	Hydraulic Tube Assembly (90°)10-L2300-1SC-24°	1	
6	253623521006	液压管总成(90°)10-L2050-1SC-24°	Hydraulic Tube Assembly (90°)10-L2050-1SC-24°	1	
7	282323520008	接头(锁定弯)10-M20x1.5-M16x1.5-24°	Connector (lock bend) 10-M20X1.5-M16X1.5-24°	3	
8	255023510008	接头(锁定弯)11-M20x1.5-0	Connector (lock bend)11-M20x1.5-0	1	
9	253623521011	液压管总成(90°)8-L1250-1SC-24°	Hydraulic Tube Assembly (90°)8-L1250-1SC-24°	1	
10	253623521010	液压管总成(90°)8-L700-1SC-24°	Hydraulic Tube Assembly (90°)8-L700-1SC-24°	1	
11	253623521009	液压管总成(直)8-L500-1SC-24°	Hydraulic Tube Assembly 8-L500-1SC-24°	1	
12	253623521010	液压管总成(90°)15-L950-2SC-24°	Hydraulic Tube Assembly (90°)15-L950-2SC-24°	1	
13	253623521001	回油胶管 (后)	Return oil hose (behind)	1	
14	251223520035	接头(锁定弯)12-G1/2-M22x1.5-24°	Connector (lock bend)12-G1/2-M22X1.5-24°	1	
15	950800200002	齿轮泵	Pump	1	25C
15	253723512006	齿轮泵	Pump	1	32C
16	255023510005	接头(转向弯)25-G1-Φ32	Joint (to bend)25-G1-Φ32	1	
17	911000600006	喉箍QC/T390-(40-45)	Hose hoops QC/T390-(40-45)	2	
18	256523520013	胶管2(吸油)	Rubber hose (oil absorption)	1	
19	900200401001	回油胶管 23x5	Return oil hose 23X5	2560	
20	911000600003	喉箍QC/T390-(22-26)	Hose hoops QC/T390-(22-26)	2	
21	911000600004	喉箍QC/T390-(34-38)	Hose hoops QC/T390-(34-38)	4	
22	253623511020	外置回油过滤器	External oil return filter	1	
23	253623521002	回油胶管 (前)	Return oil hose (front)	2	
24	255023520033	接头(直)8-M20x1.5-M16x1.5-24°	Connector (straight) 8-M20X1.5-M16X1.5-24°	6	
25	251223510012	接头(三通)7-2xM14x1.5-M16x1.5-24°	Connector (tee)7-2XM14X1.5-M16X1.5-24°	2	
26	282323520007	接头(锁定弯)12-M20x1.5-M22x1.5-24°	Connector (lock bend)12-M20x1.5-M22x1.5-24°	1	
27	253623521012	液压管总成(90°)10-L1320-1SC-24°	Hydraulic Tube Assembly (90°)8-L1320-1SC-24°	1	
28	282323520007	接头(锁定弯)12-M20x1.5-M22x1.5-24°	Connector (straight)15-M20X1.5-M22X1.5-24°	1	
29	251223520034	接头(直)8-2xM16x1.5-24°	Connector (straight)-2xM16X1.5-24°	1	
30	253623521013	接头(锁定弯)6-M12x1.5-M14x1.5-60°	Connector (lock bend) 6-M12X1.5 - M14X1.5 -60°	1	

253698501022多路换向阀操纵(四联)MULTI-WAY REVERSING VALVE CONTROL(4联)



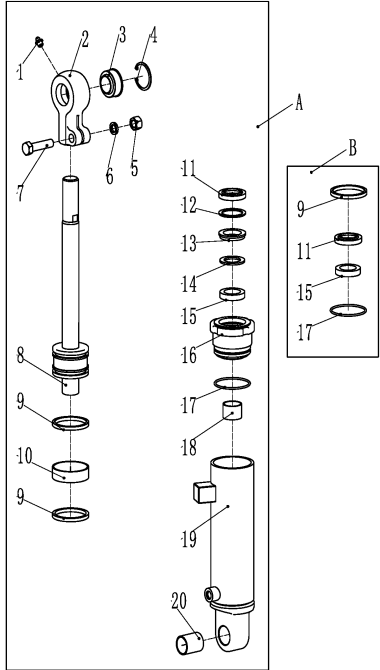
序号/NO	编码/SN	名称	Name	数量/QTY	备注/Remark
1	256825511002	多路阀(4联电磁阀ZSX)	Multi way valve (four) solenoid valve	1	
2	910100400006	螺栓GB5786-M10x1.25x40-8.8	Boit GB5786-M10x1.25x40-8.8	4	CE选配
3	910400500007	弹簧垫圈GB93-10	Spring washer GB93-10	8	
4	910400100007	平垫圈GB97.1-10-200HV	Washer GB97.1-10-200HV	12	
5	941100800001	销轴B4.75x20-c1B	Pin B4.75x20-c1B	8	
6	910600600011	开口销GB91-2x12	Cotter pin GB91-2x12	8	
7	252124520002	支架(阀杆)	Support (stem)	1	
8	910100300037	螺栓GB5783-M10x30-8.8	Bolt GB5783 M10x30-8.8	4	
9	910300100007	螺母GB6170-M10-10	Nut GB6170-M10-10	4	
10	255024510009	带耳轴Φ16x168	With trunnion Φ16x168	1	
11	910400500005	弹簧垫圈GB93-6	Spring washer GB93-6	1	
12	910200200032	螺钉GB70.1-M6x10-8.8	Screw GB70.1 M6x10-8.8	1	
13	253524520010	手柄球(起升)	Handle ball (lift)	1	
14	253524520009	手柄球(倾斜)	Handle ball (tilt)	1	
15	253525020002	手柄球(属具1)	Handle ball (belonging to1)	1	
16	253525520002	手柄球(属具2)	Handball (belonging to 2)	1	
17	253624511002	操纵杆焊合(起升)	Joystick welding (lifting)	1	
18	253624511003	操纵杆焊合(倾斜)	Joystick welding (tilt)	1	
19	253625011004	操纵杆焊合(属具1)	Joystick welding (tool 1)	1	
20	253625511005	操纵杆焊合(属具2)	Joystick welding (kit 2)	1	
21	940500100006	复合套Φ16xΦ18x15-SF-1	Composite set Φ16xΦ18x15-SF-1	8	
22	253624520003	连接杆	Connecting rod	4	
23	910300100006	螺母GB6170-M8-10	Nut GB6170 M8-10	4	
24	255025020003	接头	joint	4	
25	253524520014	支架(行程开关)	Bracket (travel switch)	4	
26	255023520033	接头(直)8-M20x1.5-M16x1.5-60°	Joint (straight)8-M20x1.5-M16x1.5-60°	4	
27	255098514001	电磁阀DC24V	Solenoid valve DC24V	1	

253698501024车架装配/FRAME ASSEMBLY



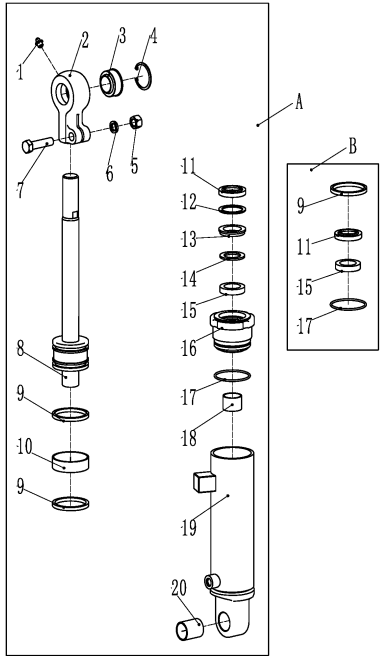
序号/NO	编码/SN	名称	Name	数量/QTY	备注/Remark
1	253621511001	车架焊合(25C)	Frame welded	1	25C
1	253721511001	车架焊合(32C)	Frame welded	1	32C
2	253621511004	盖板焊合(左)	Cover plate welding (left)	1	
3	910400200004	大垫圈GB96.1-10-200HV	Washer GB96.1-10-200HV	3	
4	910400500007	弹簧垫圈GB93-10	Washer GB93-10	9	
5	910100300037	螺栓GB5783-M10x30-8.8	Bolt GB5783 M10x30-8.8	3	
6	253621511009	仪表架焊合	Instrument frame welding	1	
7	940801500001	M6卡式螺母	nut M6	4	
8	253621511006	盖板焊合(右)	Cover plate welding (right)	1	
9	941100100009	螺钉M6x12-8.8	Screw M6x12-8.8	7	
10	253621521081	护线套SB-35	Bushing	1	
11	253621511031	护线套M24	Bushing	5	
12	253621521084	护线套SB-50	Bushing	1	
13	253621521087	电瓶减振垫(铅酸)	Battery damping pad (lead acid)	4	
14	910200400017	螺钉GB70.3-M6x16-8.8	Screw GB70.3 M6x16-8.8	8	
15	910600700041	销轴GB882-B16x120x4	Pin GB882-B16x120x4	2	
16	910600600023	开口销GB91-3x40	Split pin GB91-3x40	2	
17	910200200075	螺钉GB70.1-M10x20-8.8	Screw GB70.1 M10x20-8.8	6	
18	910400100007	平垫圈GB97.1-10-200HV	Washer GB97.1-10-200HV	6	
19	253621521097	电瓶限位支架	Battery limit bracket	2	
20	940400400002	板簧螺母M8-t(2-4)	Nut M8-t(2-4)	3	
21	941100100001	螺钉M8x30-8.8	Screw M8x30-8.8	4	
22	253621511007	左侧板焊合	Left side plate welding	1	25C
22	253721511007	左侧板焊合	Left side plate welding	1	32C
23	253621521095	侧门限位支撑板	Side door limit support plate	2	
24	253621521088	密封嵌条	Sealing strip	2	
25	253621521096	电机护板	Motor guard	1	
26	253621511008	右侧板焊合	Right side plate welding	1	25C
26	253721511008	右侧板焊合	Right side plate welding	1	32C
27	251222021078	孔塞SKT-30	Stopple(SKT-30)	2	
28	253621521080	护线套固定板(大)	Wire guard sleeve fixing plate (large)	1	

253698501031倾斜油缸/TILT CYLINDER-25C



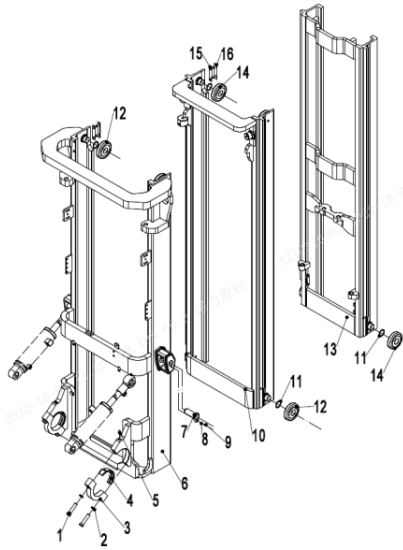
序号/NO	编码/SN	Name	名称	数量/Qty	备注/Remarks
A	253620510001	Oil cylinder(TL)Φ70xΦ32x121(6/8)	油缸(TL)Φ70xΦ32x121(6/8)	1	H≤3700,Left
A	253620510002	Oil cylinder(TL)Φ70xΦ32x103(6/6)	油缸(TL)Φ70xΦ32x103(6/6)	1	3700<H≤5000,
A	253620510003	Oil cylinder(TL)Φ70xΦ32x78(3/6)	油缸(TL)Φ70xΦ32x78(3/6)	1	5000<H,Left
A	253620510004	Oil cylinder(TR)Φ70xΦ32x121(6/8)	油缸(TR)Φ70xΦ32x121(6/8)	1	H≤3700,Right
A	253620510005	Oil cylinder(TR)Φ70xΦ32x103(6/6)	油缸(TR)Φ70xΦ32x103(6/6)	1	3700<H≤5000,
A	253620510006	Oil cylinder(TR)Φ70xΦ32x78(3/6)	油缸(TR)Φ70xΦ32x78(3/6)	1	5000<H,Right
B	252198510006	Seal kits (tilted cylinder)	密封件修理包(倾斜缸)	2	
1	▲	Grease mouth Z1/8	直通式滑脂嘴Z1/8	2	
2	▲	Earring	耳环	2	
3	▲	Bearing GE30ES	关节轴承GE30ES	2	
4	▲	Circlip 47	挡圈47	2	
5	▲	Nut M14	螺母M14	2	
6	▲	Washer14	垫圈14	2	
7	▲	Bolt M14x55	螺栓M14x55	2	
8	▲	Piston body assembly	活塞体总成	2	
9	▲	Yx seal ring	Yx型密封圈	2	
10	▲	Support ring	支承环D63x20x2.5	2	
11	▲	Dust ring	防尘圈	2	
12	▲	Circlip 52	挡圈52	2	
13	▲	Circlip	挡圈	2	
14	▲	Catch 48x30x3	挡片48x30x3	2	
15	▲	Useal ring 48x30x10	U型密封圈	2	
16	▲	Guide sleeve	导向套	2	
17	▲	O seal ring 63x3.1	O型密封圈	2	
18	▲	Bearing 3025	钢背轴承3025	2	
19	▲	Cylinder barrel assembly	缸筒总成	2	
20	▲	Bearing 3040	钢背轴承3040	2	

253698501031倾斜油缸/TILT CYLINDER-32C



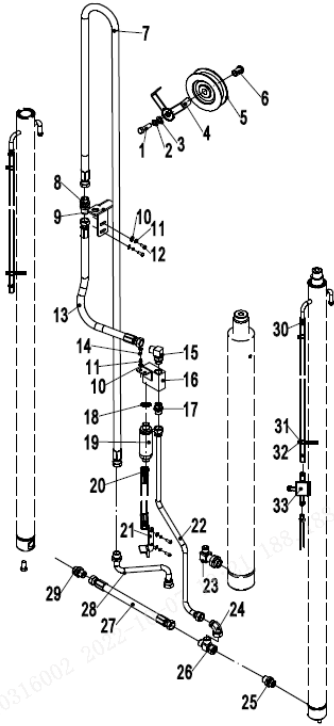
序号/NO	编码/SN	Name	名称	数量/QTY	备注/Remarks
A	253720510001	Oil cylinder(TL)Φ80xΦ35x121(6/8)	油缸(TL)Φ80xΦ35x121(6/8)	1	H≤3700,Left
A	253720510002	Oil cylinder(TL)Φ80xΦ35x103(6/6)	油缸(TL)Φ80xΦ35x103(6/6)	1	700<H≤5000,Left
A	253720510003	Oil cylinder(TL)Φ80xΦ35x70(3/5)	油缸(TL)Φ80xΦ35x70(3/5)	1	5000<H,Left
A	253720510004	Oil cylinder(TR)Φ80xΦ35x121(6/8)	油缸(TR)Φ80xΦ35x121(6/8)	1	H≤3700,Right
A	253720510005	Oil cylinder(TR)Φ80xΦ35x103(6/6)	油缸(TR)Φ80xΦ35x103(6/6)	1	700<H≤5000,Right
A	253720510006	Oil cylinder(TR)Φ80xΦ35x70(3/5)	油缸(TR)Φ80xΦ35x70(3/5)	1	5000<H,Right
B	256198510006	Seal kits (tilted cylinder)	密封件修理包(倾斜缸)	2	
1	▲	Grease mouth Z1/8	直通式滑脂嘴Z1/8	2	
2	▲	Earring	耳环	2	
3	▲	Bearing GE30ES	关节轴承GE30ES	2	
4	▲	Circlip 47	挡圈47	2	
5	▲	Nut M14	螺母M14	2	
6	▲	Washer14	垫圈14	2	
7	▲	Bolt M14x55	螺栓M14x55	2	
8	▲	Piston body assembly	活塞体总成	2	
9	▲	Yx seal ring	Yx型密封圈	2	
10	▲	Support ring	支承环D63x20x2.5	2	
11	▲	Dust ring	防尘圈	2	
12	▲	Circlip 52	挡圈52	2	
13	▲	Circlip	挡圈	2	
14	▲	Catch 48x30x3	挡片48x30x3	2	
15	▲	Useal ring 48x30x10	U型密封圈	2	
16	▲	Guide sleeve	导向套	2	
17	▲	O seal ring 63x3.1	O型密封圈	2	
18	▲	Bearing 3025	钢背轴承3025	2	
19	▲	Cylinder barrel assembly	缸筒总成	2	
20	▲	Bearing 3040	钢背轴承3040	2	

253698501033门架-25C (三级全自由)/Mast (three stage full free lift)-25C



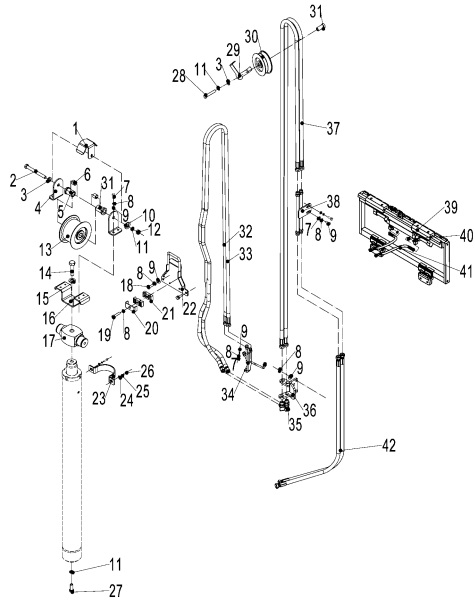
序号/NO	编码/SN	Name	名称	数量/QTY	备注/Remarks
1	910100200012	Bolt GB5785-M14x1.5x70-8.8	螺栓GB5785-M14x1.5x70-8.8	4	
2	910400500009	Washer GB93-14	弹簧垫圈GB93-14	4	
3	256844021014	Bearing cover	支座盖	2	
4	254144020063	Bearing bush	门架轴瓦	2	
5	911200100004	Oil Cup JB7940.1-M10x1	油杯JB7940.1-M10x1	2	
6	253644511041	Outer mast 3600	外门架焊合 3600	1	H=3600
6	253644511042	Outer mast 4000	外门架焊合 4000	1	H=4000
6	253644511043	Outer mast 4350	外门架焊合 4350	1	H=4350
6	253644511044	Outer mast 4500	外门架焊合 4500	1	H=4500
6	253644511045	Outer mast 4800	外门架焊合 4800	1	H=4800
6	253644511046	Outer mast 5000	外门架焊合 5000	1	H=5000
6	253644511047	Outer mast 5500	外门架焊合 5500	1	H=5500
6	253644511048	Outer mast 6000	外门架焊合 6000	1	H=6000
6	253644511049	Outer mast 6500	外门架焊合 6500	1	H=6500
7	255044010057	Axle Φ30x82	带耳轴Φ30x82	2	
8	910400500007	Washer GB93-10	弹簧垫圈GB93-10	16	
9	910100300035	Bolt GB5783-M10x20-8.8	螺栓GB5783-M10x20-8.8	4	
10	253644513001	Middle mast 3600	中门架焊合 3600	1	H=3600
10	253644513002	Middle mast 4000	中门架焊合 4000	1	H=4000
10	253644513003	Middle mast 4350	中门架焊合 4350	1	H=4350
10	253644513004	Middle mast 4500	中门架焊合 4500	1	H=4500
10	253644513005	Middle mast 4800	中门架焊合 4800	1	H=4800
10	253644513006	Middle mast 5000	中门架焊合 5000	1	H=5000
10	253644513007	Middle mast 5500	中门架焊合 5500	1	H=5500
10	253644513008	Middle mast 6000	中门架焊合 6000	1	H=6000
10	253644513009	Middle mast 6500	中门架焊合 6500	1	H=6500
11	253644520020	Washer Φ45xΦ36x0.2	垫圈Φ45xΦ36x0.2	6	选配
11	253644520021	Washer Φ45xΦ36x0.5	垫圈Φ45xΦ36x0.5	6	选配
11	253644520015	Washer Φ45xΦ36x1	垫圈Φ45xΦ36x1	6	选配
12	940200100051	Roller Φ108.2xΦ35x25	主滚轮Φ108.2xΦ35x25	4	选配
12	940200100052	Roller Φ108xΦ35x25	主滚轮Φ108xΦ35x25	4	选配

253698501034门架起升管路(三级全自由)/Mast lifting pipeline(three stage full free lift)-25C



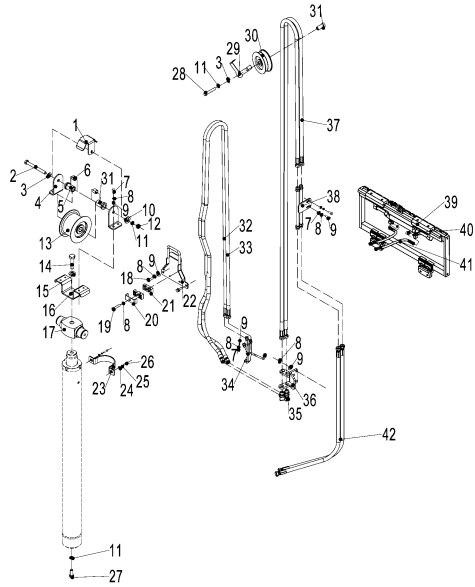
序号/NO	编码/SN	Name	名称	数量/QTY	备注/Remarks
1	910100100048	Bolt GB5782-M12x50-8.8	螺栓GB5782-M12x50-8.8	1	
2	910400500008	Spring washer gb93-12	弹簧垫圈GB93-12	1	
3	910400100008	Flat washer GB97.1-12-200HV	平垫圈GB97.1-12-200HV	1	
4	256844520021	Hose baffle	胶管挡板	1	
5	255044520096	Pulley Φ120x36 (single slot)	滑轮Φ120x36(单槽)	1	
6	255044520081	Bushings (shoulder)Φ20xΦ13x28	衬套(带肩)Φ20xΦ13x28	1	
7	253644519301	Hydraulic hose assembly 15-L1920-2SC-24°	液压管总成(直)15-L1920-2SC-24°	1	H=3600
7	253644519302	Hydraulic hose assembly 15-L2070-2SC-24°	液压管总成(直)15-L2070-2SC-24°	1	H=4000
7	253644519303	Hydraulic hose assembly 15-L2220-2SC-24°	液压管总成(直)15-L2220-2SC-24°	1	H=4350
7	253644519304	Hydraulic hose assembly 15-L2320-2SC-24°	液压管总成(直)15-L2320-2SC-24°	1	H=4500
7	253644519305	Hydraulic hose assembly 15-L2520-2SC-24°	液压管总成(直)15-L2520-2SC-24°	1	H=4800
7	253644519306	Hydraulic hose assembly 15-L2670-2SC-24°	液压管总成(直)15-L2670-2SC-24°	1	H=5000
7	253644519307	Hydraulic hose assembly 15-L3020-2SC-24°	液压管总成(直)15-L3020-2SC-24°	1	H=5500
7	253644519308	Hydraulic hose assembly 15-L3420-2SC-24°	液压管总成(直)15-L3420-2SC-24°	1	H=6000
7	253644519309	Hydraulic hose assembly 15-L3920-2SC-24°	液压管总成(直)15-L3920-2SC-24°	1	H=6500
8	950400600006	Connector 15-M22x1.5-M22x1.5-24°	接头(隔壁)15-M22x1.5-M22x1.5-24°	1	
9	253644520019	Joint over board	接头过板	1	
10	910400100006	Flat washer GB97.1-8-200HV	平垫圈GB97.1-8-200HV	5	
11	910400500006	Spring washer GB93-8	弹簧垫圈GB93-8	5	
12	910100300022	Bolt GB5783-M8x20-8.8	螺栓GB5783-M8x20-8.8	3	
13	253644519002	Hydraulic hose assembly 15-L590-2SC-24°	液压管总成(直)15-L590-2SC-24°	1	
14	910100300020	Bolt GB5783-M8x16-8.8	螺栓GB5783-M8x16-8.8	2	
15	950401100004	Connector (lock bend) 15-2xM22x1.5-24°	接头(锁定弯)15-2xM22x1.5-24°	1	
16	252144519002	Tee welded (20Q)	三通焊合(20Q)	1	
17	251223520030	Connector15-M22x1.5-M22x1.5-24°	接头(直)15-M22x1.5-M22x1.5-24°	1	
18	910800100040	O - onner 24x2.4	O形圈-外24x2.4	1	
19	950700300007	The speed limit valve XSF-F16L-48	限速阀XSF-F16L-48	1	
20	251244529004	Hydraulic hose assembly (90°)15-L800-2SC-24°	液压管总成(90°)15-L800-2SC-24°(带钢丝防护)	1	
21	253644529005	Steel tube limit plate	钢管限位板	1	
22	253644519005	Hydraulic hose assembly (90°)15-L700-2SC-24°	液压管总成(90°)15-L700-2SC-24°	1	
23	251244529002	Connector (lock bend) 12-M27x2-M22x1.5-24°	接头(锁定弯)12-M27x2-M22x1.5-24°	1	

253698501036侧移器及管路安装(三级全自由)/Side shifter and pipeline installation(three stage full free)-25C



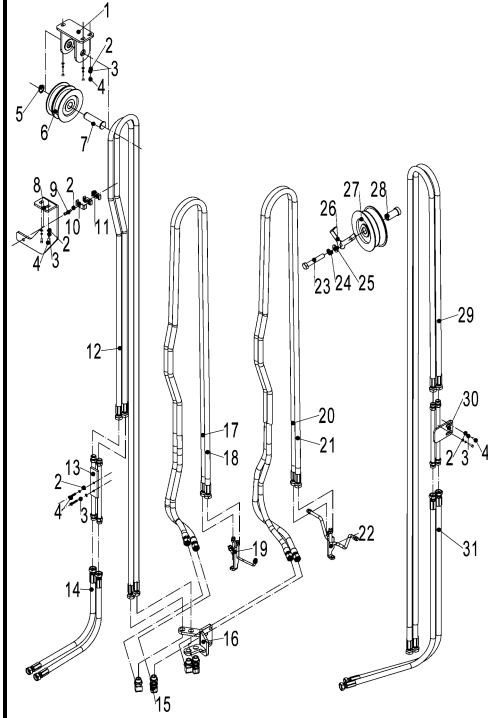
序号/NO	编码/SN	Name	名称	数量/QTY	备注/Remarks
1	253630520904	Middle cylinder rubber tube cover	中缸胶管护罩	1	
2	910100100060	Bolt GB5782-M12x120-8.8	螺栓GB5782-M12x120-8.8	1	
3	910400100008	Washer GB97.1-12-200HV	平垫圈GB97.1-12-200HV	2	
4	253630520906	Stent	支架	2	
5	910400200005	Washer GB96.1-12-200HV	大垫圈GB96.1-12-200HV	2	
6	253631020021	Bush $\Phi 20 \times \Phi 13 \times 74$	衬套 $\Phi 20 \times \Phi 13 \times 74$	1	
7	940500100019	Bush $\Phi 20 \times \Phi 13 \times 74$	复合套 $\Phi 20 \times \Phi 23 \times 20$ -SF-1	2	
8	910100300020	Bolt GB5782-M12x120-8.8	螺栓GB5783-M8x16-8.8	6	
9	910400500006	Washer GB93-8	弹簧垫圈GB93-8	10	
10	910400100006	Washer GB97.1-8-200HV	平垫圈GB97.1-8-200HV	10	
11	910400500008	Washer GB93-12	弹簧垫圈GB93-12	2	
12	910300100008	Nut GB6170-M12-10	螺母GB6170-M12-10	1	
13	253631020020	Pulley $\Phi 104 \times 76$	滑轮 $\Phi 104 \times 76$ (四联)	1	
14	910100100072	Bolt GB5782-M16x60-8.8	螺栓GB5782-M16x60-8.8	1	
15	910400500010	Spring Washer GB93-16	弹簧垫圈GB93-16	1	
16	253644520012	Middle cylinder chain baffle	中缸链条挡板	1	
17	253645220011	Cylinder head	缸头	2	
18	910100300023	Bolt GB5783-M8x25-8.8	螺栓GB5783-M8x25-8.8	2	
19	910100300027	Bolt GB5783-M8x45-8.8	螺栓GB5783-M8x45-8.8	2	
20	255028520035	Pipe press fixedly plank	管夹安装板	2	
21	255028520034	Rubber pipe lump	胶管固定块	4	
22	253630510001	Intermediate cylinder rubber tube transition frame	中缸胶管过渡架	1	
23	253644520004	Embrace hoop	抱箍	2	
24	910400100007	Washer GB97.1-10-200HV	平垫圈GB97.1-10-200HV	2	
25	910400500007	Washer GB93-10	弹簧垫圈GB93-10	2	
26	910100300036	Bolt GB5783-M10x25-8.8	螺栓GB5783-M10x25-8.8	1	
27	910100300050	Bolt GB5783-M12x30-8.8	螺栓GB5783-M12x30-8.8	1	
28	910100100048	Bolt GB5782-M12x50-8.8	螺栓GB5782-M12x50-8.8	1	
29	256844520021	Hose baffle	胶管挡板	1	
30	255030520020	Pulley $\Phi 120 \times 42$	滑轮 $\Phi 120 \times 42$ (双槽)	1	
31	255030520023	Bush	衬套1		

253698501036侧移器及管路安装(三级全自由)/Side shifter and pipeline installation(three stage full free)-25C



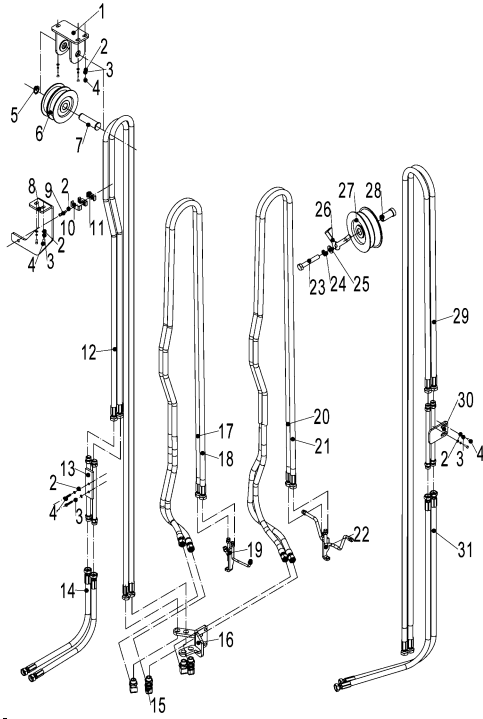
序号/NO	编码/SN	Name	名称	数量/QTY	备注/Remarks
32	251328520704	Hydraulic hose assembly 10-L2220-1SC-24°	液压管总成(直)10-L2220-1SC-24°	2	H=3600
32	253630520106	Hydraulic hose assembly 10-L2330-1SC-24°	液压管总成(直)10-L2330-1SC-24°	2	H=4000
32	251230520716	Hydraulic hose assembly 10-L2470-1SC-24°	液压管总成(直)10-L2470-1SC-24°	2	H=4350
32	251330520702	Hydraulic hose assembly 10-L2510-1SC-24°	液压管总成(直)10-L2510-1SC-24°	2	H=4500
32	251230520704	Hydraulic hose assembly 10-L2610-1SC-24°	液压管总成(直)10-L2610-1SC-24°	2	H=4800
32	253630520107	Hydraulic hose assembly 10-L2680-1SC-24°	液压管总成(直)10-L2680-1SC-24°	2	H=5000
32	251228520701	Hydraulic hose assembly 10-L2850-1SC-24°	液压管总成(直)10-L2850-1SC-24°	2	H=5500
32	253630520105	Hydraulic hose assembly 10-L3070-1SC-24°	液压管总成(直)10-L3070-1SC-24°	2	H=6000
32	253630520108	Hydraulic hose assembly 10-L3320-1SC-24°	液压管总成(直)10-L3320-1SC-24°	2	H=6500
33	251329020701	Hydraulic hose assembly 10-L2170-1SC-24°	液压管总成(直)10-L2170-1SC-24°	2	H=3600
33	251230520715	Hydraulic hose assembly 10-L2295-1SC-24°	液压管总成(直)10-L2295-1SC-24°	2	H=4000
33	251230520703	Hydraulic hose assembly 10-L2410-1SC-24°	液压管总成(直)10-L2410-1SC-24°	2	H=4350
33	251230520716	Hydraulic hose assembly 10-L2470-1SC-24°	液压管总成(直)10-L2470-1SC-24°	2	H=4500
33	253630520104	Hydraulic hose assembly 10-L2570-1SC-24°	液压管总成(直)10-L2570-1SC-24°	2	H=4800
33	251231020702	Hydraulic hose assembly 10-L2650-1SC-24°	液压管总成(直)10-L2650-1SC-24°	2	H=5000
33	253630520109	Hydraulic hose assembly 10-L2820-1SC-24°	液压管总成(直)10-L2820-1SC-24°	2	H=5500
33	282323520029	Hydraulic hose assembly 10-L3030-1SC-24°	液压管总成(直)10-L3030-1SC-24°	2	H=6000
33	253630520110	Hydraulic hose assembly 10-L3270-1SC-24°	液压管总成(直)10-L3270-1SC-24°	2	H=6500
34	253630520004	Single attached hose bracket	单附胶管支架	1	
35	950400600002	Joint 10-M16x1.5-M16x1.5-24°	接头(隔壁弯)10-M16x1.5-M16x1.5-24°	1	
36	253630510002	Hose mounting rack	胶管安装架	1	
37	253630520102	Hydraulic hose assembly 10-L2020-1SC-24°	液压管总成(直)10-L2020-1SC-24°	2	H=3600
37	253630520201	Hydraulic hose assembly 10-L2260-1SC-24°	液压管总成(直)10-L2260-1SC-24°	2	H=4000
37	251330520702	Hydraulic hose assembly 10-L2510-1SC-24°	液压管总成(直)10-L2510-1SC-24°	2	H=4350
37	251230520704	Hydraulic hose assembly 10-L2610-1SC-24°	液压管总成(直)10-L2610-1SC-24°	2	H=4500
37	251330520704	Hydraulic hose assembly 10-L2910-1SC-24°	液压管总成(直)10-L2910-1SC-24°	2	H=4800
37	251330520705	Hydraulic hose assembly 10-L3210-1SC-24°	液压管总成(直)10-L3210-1SC-24°	2	H=5000
37	251331020705	Hydraulic hose assembly 10-L3950-1SC-24°	液压管总成(直)10-L3950-1SC-24°	2	H=5500
37	253631020105	Hydraulic hose assembly 10-L4420-1SC-24°	液压管总成(直)10-L4420-1SC-24°	2	H=6000
37	283327520012	Hydraulic hose assembly 10-L4880-1SC-24°	液压管总成(直)10-L4880-1SC-24°	2	H=6500
38	251330510004	Hydraulic steel pipe welding (24°)	液压钢管焊合(24°)	1	

253698501038双附加管路(三级全自由)/DOUBLE ADDITIONAL TUBE(three stage full free)-25C



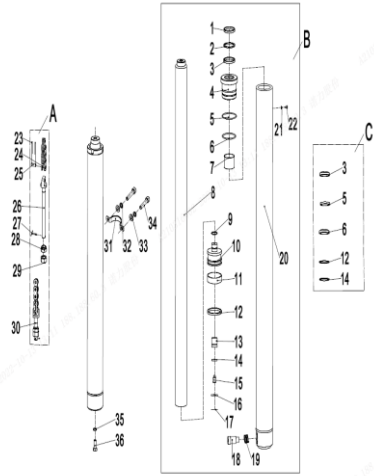
序号/NO	编码/SN	Name	名称	数量/QTY	备注/Remarks
1	255031010002	Pulley support welded 2	滑轮支架焊合2	1	
1	255031010001	Pulley support welded 1	滑轮支架焊合1	1	
2	910400100006	Washer GB97.1-8-200HV	平垫圈GB97.1-8-200HV	4	
3	910400500006	Washer GB93-8	弹簧垫圈GB93-8	4	
4	910100300022	Bolt GB5783-M8x20-8.8	螺栓GB5783-M8x20-8.8	2	
5	910401300011	Circlip GB894.1-20	轴用弹性挡圈GB894.1-20	1	
6	255031020007	Pulley Φ90x22	滑轮Φ90x22(单槽)	2	
7	255031020004	Axle Φ20x70	带耳轴Φ20x70	1	
8	253631020901	Hose fixing plate	胶管固定板	1	
9	910100300025	Bolt GB5783-M8x35-8.8	螺栓GB5783-M8x35-8.8	4	
10	255028520035	Pipe press fixedly plank	安装板(管夹)	4	
11	255028520034	Hose fixing bloke	胶管固定块	8	
12	253630520111	Hydraulic hose assembly 10-L1630-1SC-24°	液压管总成(直)10-L1630-1SC-24°	2	H=3600
12	251230520711	Hydraulic hose assembly 10-L1870-1SC-24°	液压管总成(直)10-L1870-1SC-24°	2	H=4000
12	251230520714	Hydraulic hose assembly 10-L2120-1SC-24°	液压管总成(直)10-L2120-1SC-24°	2	H=4350
12	251328520704	Hydraulic hose assembly 10-L2220-1SC-24°	液压管总成(直)10-L2220-1SC-24°	2	H=4500
12	251328520705	Hydraulic hose assembly 10-L2530-1SC-24°	液压管总成(直)10-L2530-1SC-24°	2	H=4800
12	251230520705	Hydraulic hose assembly 10-L2810-1SC-24°	液压管总成(直)10-L2810-1SC-24°	2	H=5000
12	251331020704	Hydraulic hose assembly 10-L3550-1SC-24°	液压管总成(直)10-L3550-1SC-24°	2	H=5500
12	251228020003	Hydraulic hose assembly 10-L4050-1SC-24°	液压管总成(直)10-L4050-1SC-24°	2	H=6000
12	251227520006	Hydraulic hose assembly 10-L4500-1SC-24°	液压管总成(直)10-L4500-1SC-24°	2	H=6500
13	251331010002	Hydraulic steel pipe welding(24°)	过渡钢管总成(24°)	1	
14	253631020003	Hydraulic hose assembly 10-L630-1SC-24°	液压管总成(直)10-L630-1SC-24°	2	
15	950400600002	Joint (adjoining bend) 10-M16x1.5-M16x1.5-24°	接头(隔壁弯)10-M16x1.5-M16x1.5-24°	4	
16	253631010001	Hose mounting rack	胶管安装架	1	
17	253631020103	Hydraulic hose assembly 10-L2080-1SC-24°	液压管总成(直)10-L2080-1SC-24°	2	H=3600
17	251223520001	Hydraulic hose assembly 10-L2200-1SC-24°	液压管总成(直)10-L2200-1SC-24°	2	H=4000
17	253630520106	Hydraulic hose assembly 10-L2330-1SC-24°	液压管总成(直)10-L2330-1SC-24°	2	H=4350
17	253631020202	Hydraulic hose assembly 10-L2380-1SC-24°	液压管总成(直)10-L2380-1SC-24°	2	H=4500
17	251230520716	Hydraulic hose assembly 10-L2470-1SC-24°	液压管总成(直)10-L2470-1SC-24°	2	H=4800
17	253630520201	Hydraulic hose assembly 10-L2545-1SC-24°	液压管总成(直)10-L2545-1SC-24°	2	H=5000

253698501038双附加管路(三级全自由)/DOUBLE ADDITIONAL TUBE(three stage full free)-25C



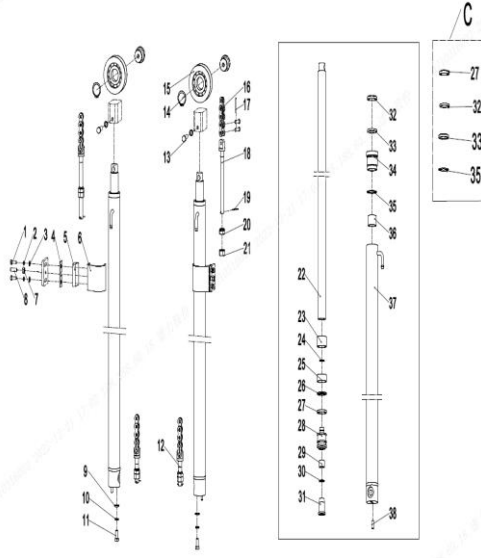
序号/NO	编码/SN	Name	名称	数量/QTY	备注/Remarks
17	251330520703	Hydraulic hose assembly 10-L2710-1SC-24°	液压管总成(直)10-L2710-1SC-24°	2	H=5500
17	251330520704	Hydraulic hose assembly 10-L2910-1SC-24°	液压管总成(直)10-L2910-1SC-24°	2	H=6000
17	251231020705	Hydraulic hose assembly 10-L3150-1SC-24°	液压管总成(直)10-L3150-1SC-24°	2	H=6500
18	251230520701	Hydraulic hose assembly 10-L2060-1SC-24°	液压管总成(直)10-L2060-1SC-24°	2	H=3600
18	251329020701	Hydraulic hose assembly 10-L2170-1SC-24°	液压管总成(直)10-L2170-1SC-24°	2	H=4000
18	251230520715	Hydraulic hose assembly 10-L2295-1SC-24°	液压管总成(直)10-L2295-1SC-24°	2	H=4350
18	251329020702	Hydraulic hose assembly 10-L2360-1SC-24°	液压管总成(直)10-L2360-1SC-24°	2	H=4500
18	253631020104	Hydraulic hose assembly 10-L2450-1SC-24°	液压管总成(直)10-L2450-1SC-24°	2	H=4800
18	251328520705	Hydraulic hose assembly 10-L2530-1SC-24°	液压管总成(直)10-L2530-1SC-24°	2	H=5000
18	251330520703	Hydraulic hose assembly 10-L2710-1SC-24°	液压管总成(直)10-L2710-1SC-24°	2	H=5500
18	251330520704	Hydraulic hose assembly 10-L2910-1SC-24°	液压管总成(直)10-L2910-1SC-24°	2	H=6000
18	251231020705	Hydraulic hose assembly 10-L3150-1SC-24°	液压管总成(直)10-L3150-1SC-24°	2	H=6500
19	253630520004	Single attached hose bracket	单附胶管支架	1	
20	251328520704	Hydraulic hose assembly 10-L2220-1SC-24°	液压管总成(直)10-L2220-1SC-24°	2	H=3600
20	253630520106	Hydraulic hose assembly 10-L2330-1SC-24°	液压管总成(直)10-L2330-1SC-24°	2	H=4000
20	251230520716	Hydraulic hose assembly 10-L2470-1SC-24°	液压管总成(直)10-L2470-1SC-24°	2	H=4350
20	251330520702	Hydraulic hose assembly 10-L2510-1SC-24°	液压管总成(直)10-L2510-1SC-24°	2	H=4500
20	251230520704	Hydraulic hose assembly 10-L2610-1SC-24°	液压管总成(直)10-L2610-1SC-24°	2	H=4800
20	253630520107	Hydraulic hose assembly 10-L2680-1SC-24°	液压管总成(直)10-L2680-1SC-24°	2	H=5000
20	251228520701	Hydraulic hose assembly 10-L2850-1SC-24°	液压管总成(直)10-L2850-1SC-24°	2	H=5500
20	253630520105	Hydraulic hose assembly 10-L3070-1SC-24°	液压管总成(直)10-L3070-1SC-24°	2	H=6000
20	253630520108	Hydraulic hose assembly 10-L3320-1SC-24°	液压管总成(直)10-L3320-1SC-24°	2	H=6500
21	251329020701	Hydraulic hose assembly 10-L2170-1SC-24°	液压管总成(直)10-L2170-1SC-24°	2	H=3600
21	251230520715	Hydraulic hose assembly 10-L2295-1SC-24°	液压管总成(直)10-L2295-1SC-24°	2	H=4000
21	251230520703	Hydraulic hose assembly 10-L2410-1SC-24°	液压管总成(直)10-L2410-1SC-24°	2	H=4350
21	251230520716	Hydraulic hose assembly 10-L2470-1SC-24°	液压管总成(直)10-L2470-1SC-24°	2	H=4500
21	253630520104	Hydraulic hose assembly 10-L2570-1SC-24°	液压管总成(直)10-L2570-1SC-24°	2	H=4800
21	251231020702	Hydraulic hose assembly 10-L2650-1SC-24°	液压管总成(直)10-L2650-1SC-24°	2	H=5000
21	253630520109	Hydraulic hose assembly 10-L2820-1SC-24°	液压管总成(直)10-L2820-1SC-24°	2	H=5500
21	282323520029	Hydraulic hose assembly 10-L3030-1SC-24°	液压管总成(直)10-L3030-1SC-24°	2	H=6000
21	253630520110	Hydraulic hose assembly 10-L3270-1SC-24°	液压管总成(直)10-L3270-1SC-24°	2	H=6500

253698501039短起升油缸(三级全自由门架)/SHORT LIFTING CYLINDER (three stage full free) -25C



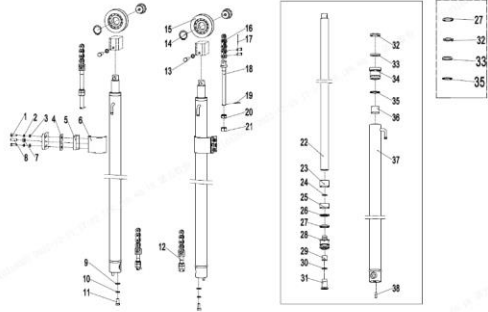
序号/NO	编码/SN	Name	名称	数量/QTY	备注/Remarks
A	255043510090	Lifting chain LH1623×37	起升链条LH1623×37	2	H=3600
A	255044510124	Lifting chain LH1623×45	起升链条LH1623×45	2	H=4000
A	255044010109	Lifting chain LH1623×51	起升链条LH1623×51	2	H=4350
A	255044510045	Lifting chain LH1623×53	起升链条LH1623×53	2	H=4500
A	255044010059	Lifting chain LH1623×57	起升链条LH1623×57	2	H=4800
A	255044510133	Lifting chain LH1623×59	起升链条LH1623×59	2	H=5000
A	256844014002	Lifting chain LH1623×65	起升链条LH1623×65	2	H=5500
A	255044510138	Lifting chain LH1623×73	起升链条LH1623×73	2	H=6000
A	255044010101	Lifting chain LH1623×77	起升链条LH1623×77	2	H=6500
B	253644518001	Short lifting cylinderΦ75xΦ50x622	油缸(M)Φ75xΦ50x622	1	H=3600
B	253644518002	Short lifting cylinderΦ75xΦ50x685	油缸(M)Φ75xΦ50x685	1	H=4000
B	253644518003	Short lifting cylinderΦ75xΦ50x748	油缸(M)Φ75xΦ50x748	1	H=4350
B	253644518004	Short lifting cylinderΦ75xΦ50x772	油缸(M)Φ75xΦ50x772	1	H=4500
B	253644518005	Short lifting cylinderΦ75xΦ50x805	油缸(M)Φ75xΦ50x805	1	H=4800
B	253644518006	Short lifting cylinderΦ75xΦ50x822	油缸(M)Φ75xΦ50x822	1	H=5000
B	253644518007	Short lifting cylinderΦ75xΦ50x879	油缸(M)Φ75xΦ50x879	1	H=5500
B	253644518008	Short lifting cylinderΦ75xΦ50x979	油缸(M)Φ75xΦ50x979	1	H=6000
B	253644518009	Short lifting cylinderΦ75xΦ50x995	油缸(M)Φ75xΦ50x995	1	H=6500
C	255098510002	Seal kits(middle cylinder)	密封件修理包(三级全自由中缸)	1	
1	▲	Dust ring 50x58x7/6.5	防尘圈50x58x7/6.5	1	
2	▲	Catch 50×60×3	挡片50x60x3	1	
3	▲	Seal ring 50×60×6	密封圈50x60x6	1	
4	▲	Glide sleeve	导向套	1	
5	▲	O ring D75X3.1	O型密封圈D75X3.1	1	
A	▲	O ring D75X3.1	O型密封圈D70x3.1	1	
A	▲	Bearing50x55x40	钢背轴承 50x55x40	1	
A	▲	HSG Piston rod	HSG活塞杆	1	
A	▲	Circlip	钢丝挡圈	1	
A	▲	Piston assembly	活塞总成	1	
A	▲	Support ring 65x70x20	支承环65x70x20	1	
A	▲	Seal ring 70x60x6	孔用密封圈70x60x6	1	

253698501040起升油缸(三级全自由门架)/ LIFTING CYLINDER (three stage full free) -25C



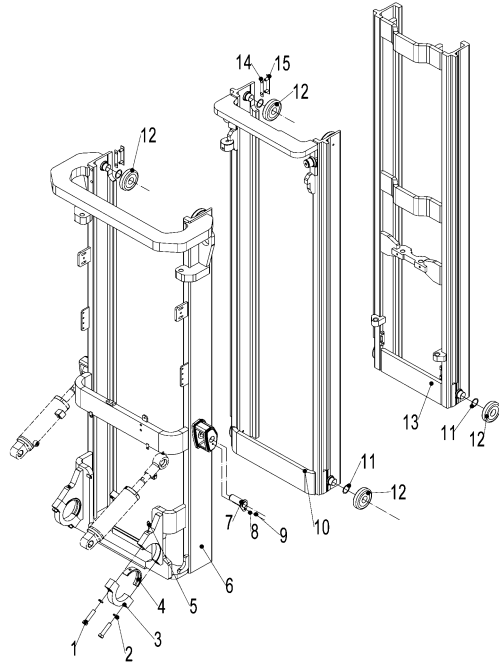
序号/NO	编码/SN	Name	名称	数量/QTY	备注/Remarks
A	253644516001	cylinderΦ50xΦ40x1400	油缸(L)Φ50xΦ40x1400	1	H=3600
A	253644516002	cylinderΦ50xΦ40x1525	油缸(L)Φ50xΦ40x1525	1	H=4000
A	253644516003	cylinderΦ50xΦ40x1645	油缸(L)Φ50xΦ40x1645	1	H=4350
A	253644516004	cylinderΦ50xΦ40x1695	油缸(L)Φ50xΦ40x1695	1	H=4500
A	253644516005	cylinderΦ50xΦ40x1795	油缸(L)Φ50xΦ40x1795	1	H=4800
A	253644516006	cylinderΦ50xΦ40x1870	油缸(L)Φ50xΦ40x1870	1	H=5000
A	253644516007	cylinderΦ50xΦ40x2045	油缸(L)Φ50xΦ40x2045	1	H=5500
A	253644516008	cylinderΦ50xΦ40x2245	油缸(L)Φ50xΦ40x2245	1	H=6000
A	253644516009	cylinderΦ50xΦ40x2477	油缸(L)Φ50xΦ40x2477	1	H=6500
B	253644517001	cylinderΦ50xΦ40x1400	油缸(R)Φ50xΦ40x1400	1	H=3600
B	253644517002	cylinderΦ50xΦ40x1525	油缸(R)Φ50xΦ40x1525	1	H=4000
B	253644517003	cylinderΦ50xΦ40x1645	油缸(R)Φ50xΦ40x1645	1	H=4350
B	253644517004	cylinderΦ50xΦ40x1695	油缸(R)Φ50xΦ40x1695	1	H=4500
B	253644517005	cylinderΦ50xΦ40x1795	油缸(R)Φ50xΦ40x1795	1	H=4800
B	253644517006	cylinderΦ50xΦ40x1870	油缸(R)Φ50xΦ40x1870	1	H=5000
B	253644517007	cylinderΦ50xΦ40x2045	油缸(R)Φ50xΦ40x2045	1	H=5500
B	253644517008	cylinderΦ50xΦ40x2245	油缸(R)Φ50xΦ40x2245	1	H=6000
B	253644517009	cylinderΦ50xΦ40x2477	油缸(R)Φ50xΦ40x2477	1	H=6500
C	255098510003	Seal kits(three stage full free lifting cylinder)	密封件修理包(三级全自由起升缸)	1	
D	255044510133	Lifting chain LH1623-59	起升链条LH1623-59	2	H=3600
D	256844014002	Lifting chain LH1623-65	起升链条LH1623-65	2	H=4000
D	255044510046	Lifting chain LH1623-69	起升链条LH1623-69	2	H=4350
D	255044510136	Lifting chain LH1623-71	起升链条LH1623-71	2	H=4500
D	255044010101	Lifting chain LH1623-75	起升链条LH1623-75	2	H=4800
D	255043510139	Lifting chain LH1623-77	起升链条LH1623-77	2	H=5000
D	255044510140	Lifting chain LH1623-85	起升链条LH1623-85	2	H=5500
D	253543510066	Lifting chain LH1623-93	起升链条LH1623-93	2	H=6000
D	255044510049	Lifting chain LH1623-103	起升链条LH1623-103	2	H=6500
1	910100300023	Bolt GB5783-M8x25-8.8	螺栓GB5783-M8x25-8.8	4	
2	910400500007	Washer GB93-10	弹簧垫圈GB93-10	4	
3	910400100007	Washer GB97.1-10-200HV	平垫圈GB97.1-10-200HV	4	

253698501040起升油缸(三级全自由门架)/ LIFTING CYLINDER (three stage full free) -25C



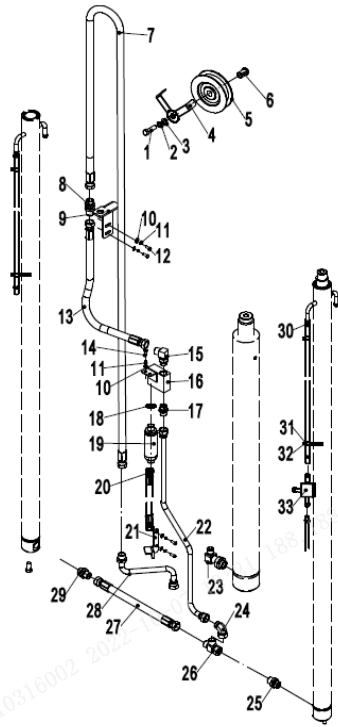
序号/NO	编码/SN	Name	名称	数量/QTY	备注/Remarks
4	255044520099	Rubber pad	橡胶垫	2	
5	255044520097	Support block	支撑块	2	
6	255044520098	Blendboard	弯板	2	
7	941100100003	Nut GB6170-M10-10	螺母GB6170-M10-10	2	
8	910300100007	Screw M10x35-8.8	螺钉M10x35-8.8	2	
9	910400100008	Washer GB97.1-12-200HV	平垫圈GB97.1-12-200HV	2	
10	910400500008	Washer GB93-12	弹簧垫圈GB93-12	2	
11	910100400009	Bolt GB5786-M12x1.25x25-8.8	螺栓GB5786-M12x1.25x25-8.8	2	
12	255044020156	Joint M18x1.5x102	链条螺栓M18x1.5x102	2	
13	910100300035	Bolt GB5783-M10x20-8.8	螺栓GB5783-M10x20-8.8	2	
14	910401300020	Circlip GB894.1-40	轴用弹性挡圈GB894.1-40	2	
15	940200500005	Chain wheel bearing 780708K-Φ110xΦ40x27	链轮轴承780708K-Φ110xΦ40x27	2	
16	910900400014	LH1623chain	板式链GB6074-LH1623	2	
17	910600600022	Split pin 2.5x40	开口销2.5x40	2	
18	255044020157	Joint M18x1.5x217	链条螺栓M18x1.5x217	2	
19	910600600030	Split pin 3.2x30	开口销GB91-3.2x30	2	
20	255044020158	Nut M18x1.5	球面螺母M18x1.5	2	
21	910300400007	Nut M18x1.5	螺母GB6173-M18x1.5-05	2	
22	▲	Piston rod	活塞杆	1	
23	▲	Adjusting bushing 40.5x49xL2	调整套40.5x49xL2	1	
24	▲	Circlip Φ24x2	钢丝挡圈Φ24x2	1	
25	▲	Bearing 56x20x2.5	支承56x20x2.5	1	
26	▲	Catch 56x45x3	挡片56x44x3	1	
27	▲	Seal ring 56x45x6	孔用密封圈	1	
28	▲	Piston	活塞	1	
29	▲	Copper bushing	铜套	1	
30	▲	Circlip Φ26.5x2	钢丝挡圈Φ26.5x2	1	
31	▲	Buffer ring	缓冲环	1	
32	▲	Dust ring DKB45x58x7/10	防尘圈	1	
33	▲	Seal ring 40x50x6	轴用密封圈	1	
34	▲	Guide bushing	导向套	1	

门架-32C (三级全自由)/Mast (three stage full free lift)-32C



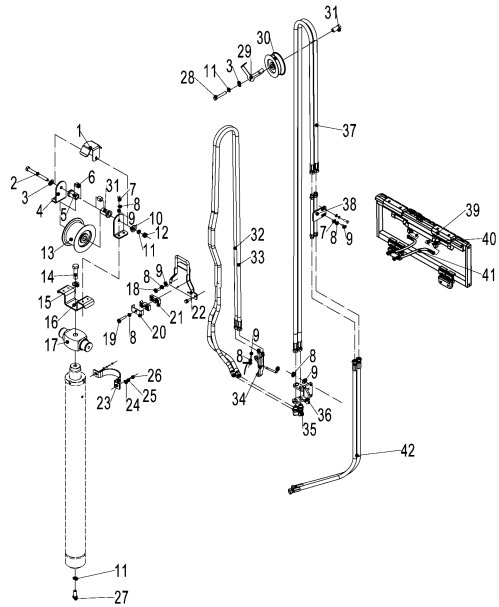
序号/NO	编码/SN	Name	名称	数量/QTY	备注/Remarks
1	910100200012	Bolt GB5785-M14x1.5x70-8.8	螺栓GB5785-M14x1.5x70-8.8	4	
2	910400500009	Washer GB93-14	弹簧垫圈GB93-14	4	
3	256844021014	Bearing cover	支座盖	2	
4	254144020043	Bearing bush	门架轴瓦	2	
5	911200100004	Oil Cup JB7940.1-M10x1	油杯JB7940.1-M10x1	2	
6	253744511001	Outer mast 3600	外门架焊合 3600	1	H=3600
6	253744511002	Outer mast 4000	外门架焊合 4000	1	H=4000
6	253744511003	Outer mast 4350	外门架焊合 4350	1	H=4350
6	253744511004	Outer mast 4500	外门架焊合 4500	1	H=4500
6	253744511005	Outer mast 4700	外门架焊合 4700	1	H=4700
6	253744511006	Outer mast 4800	外门架焊合 4800	1	H=4800
6	253744511007	Outer mast 5000	外门架焊合 5000	1	H=5000
6	253744511008	Outer mast 5400	外门架焊合 5400	1	H=5400
6	253744511009	Outer mast 5500	外门架焊合 5500	1	H=5500
6	253744511010	Outer mast 6000	外门架焊合 6000	1	H=6000
6	253744511011	Outer mast 6500	外门架焊合 6500	1	H=6500
7	255044010057	Axle Φ30x82	带耳轴Φ30x82	2	
8	910400500007	Washer GB93-10	弹簧垫圈GB93-10	16	
9	910100300035	Bolt GB5783-M10x20-8.8	螺栓GB5783-M10x20-8.8	4	
10	253744513001	Middle mast 3600	中门架焊合 3600	1	H=3600
10	253744513002	Middle mast 4000	中门架焊合 4000	1	H=4000
10	253744513003	Middle mast 4350	中门架焊合 4350	1	H=4350
10	253744513004	Middle mast 4500	中门架焊合 4500	1	H=4500
10	253744513005	Middle mast 4700	中门架焊合 4700	1	H=4700
10	253744513006	Middle mast 4800	中门架焊合 4800	1	H=4800
10	253744513007	Middle mast 5000	中门架焊合 5000	1	H=5000
10	253744513008	Middle mast 5400	中门架焊合 5400	1	H=5400
10	253744513009	Middle mast 5500	中门架焊合 5500	1	H=5500
10	253744513010	Middle mast 6000	中门架焊合 6000	1	H=6000
10	253744513011	Middle mast 6500	中门架焊合 6500	1	H=6500
11	253645220001	Washer Φ45xΦ36x0.2	主滚轮调整圈T0.2	8	选配

门架起升管路 (三级全自由)/Mast lifting pipeline(three stage full free lift)-32C



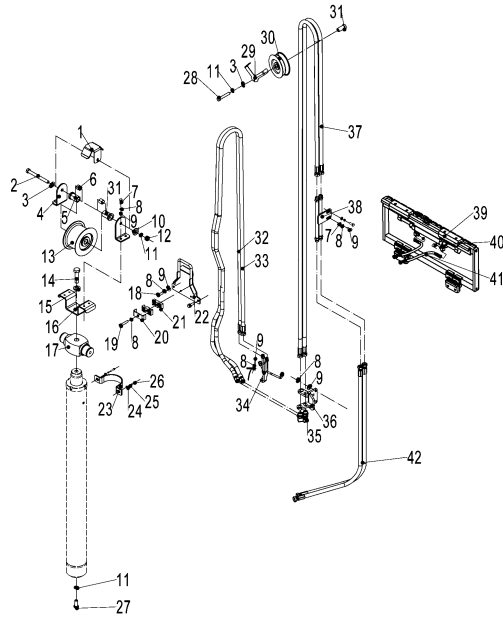
序号/NO	编码/SN	Name	名称	数量/QTY	备注/Remarks
1	910100100048	Bolt GB5782-M12x50-8.8	螺栓GB5782-M12x50-8.8	1	
2	910400500008	Spring washer gb93-12	弹簧垫圈GB93-12	1	
3	910400100008	Flat washer GB97.1-12-200HV	平垫圈GB97.1-12-200HV	1	
4	256844520021	Hose baffle	胶管挡板	1	
5	255044520096	Pulley Φ120x36 (single slot)	滑轮Φ120x36(单槽)	1	
6	255044520081	Bushings (shoulder)Φ20xΦ13x28	衬套(带肩)Φ20xΦ13x28	1	
7	253644519301	Hydraulic hose assembly 15-L1950-2SC-24°	液压管总成(直)15-L1950-2SC-24°	1	H=3600
7	253644519302	Hydraulic hose assembly 15-L2100-2SC-24°	液压管总成(直)15-L2100-2SC-24°	1	H=4000
7	253644519303	Hydraulic hose assembly 15-L2250-2SC-24°	液压管总成(直)15-L2250-2SC-24°	1	H=4350
7	253644519304	Hydraulic hose assembly 15-L2350-2SC-24°	液压管总成(直)15-L2350-2SC-24°	1	H=4500
7	253644519305	Hydraulic hose assembly 15-L2550-2SC-24°	液压管总成(直)15-L2550-2SC-24°	1	H=4800
7	253644519306	Hydraulic hose assembly 15-L2700-2SC-24°	液压管总成(直)15-L2700-2SC-24°	1	H=5000
7	253644519307	Hydraulic hose assembly 15-L3050-2SC-24°	液压管总成(直)15-L3050-2SC-24°	1	H=5500
7	253644519308	Hydraulic hose assembly 15-L3450-2SC-24°	液压管总成(直)15-L3450-2SC-24°	1	H=6000
7	253644519309	Hydraulic hose assembly 15-L3950-2SC-24°	液压管总成(直)15-L3950-2SC-24°	1	H=6500
8	950400600006	Connector 15-M22x1.5-M22x1.5-24°	接头(隔壁)15-M22x1.5-M22x1.5-24°	1	
9	253644520019	Joint over board	接头过板	1	
10	910400100006	Flat washer GB97.1-8-200HV	平垫圈GB97.1-8-200HV	5	
11	910400500006	Spring washer GB93-8	弹簧垫圈GB93-8	5	
12	910100300022	Bolt GB5783-M8x20-8.8	螺栓GB5783-M8x20-8.8	3	
13	253644519002	Hydraulic hose assembly 15-L590-2SC-24°	液压管总成(直)15-L590-2SC-24°	1	
14	910100300020	Bolt GB5783-M8x16-8.8	螺栓GB5783-M8x16-8.8	2	
15	950401100004	Connector (lock bend) 15-2xM22x1.5-24°	接头(锁定弯-0R)15-2xM22x1.5-24°	1	
16	252144519002	Tee welded (20Q)	三通焊合(20Q)	1	
17	251223520030	Connector15-M22x1.5-M22x1.5-24°	接头(直)15-M22x1.5-M22x1.5-24°	1	
18	910800100040	O - onner 24x2.4	O形圈-外24x2.4	1	
19	950700300007	The speed limit valve XSF-F16L-48	限速阀XSF-F16L-48	1	
20	253644529004	Hydraulic hose assembly (135°)15-L850-2SC-	液压管总成(135°)15-L850-2SC-24°	1	
21	253644529005	Steel tube limit plate	钢管限位板	1	
22	253644519005	Hydraulic hose assembly (90°)15-L700-2SC-	液压管总成(90°)15-L700-2SC-24°	1	
23	251244529002	Connector (lock bend) 12-M27x2-M22x1.5-24°	接头(锁定弯)12-M27x2-M22x1.5-24°	1	

侧移器及管路安装(三级全自由)/Side shifter and pipeline installation(three stage full free)-32C



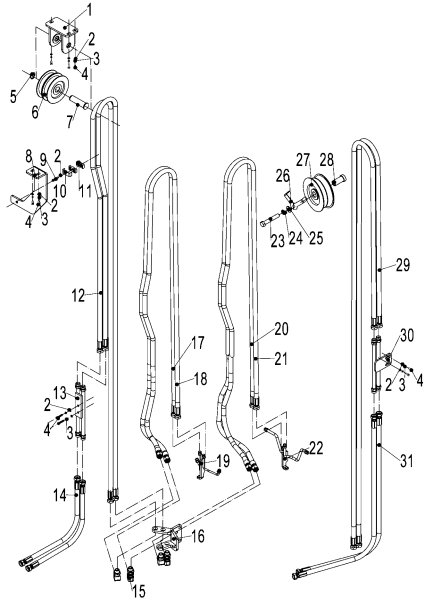
序号/NO	编码/SN	Name	名称	数量/Qty	备注/Remarks
1	253630520904	Middle cylinder rubber tube cover	中缸胶管护罩	1	
2	910100100060	Bolt GB5782-M12x120-8.8	螺栓GB5782-M12x120-8.8	1	
3	910400100008	Washer GB97.1-12-200HV	平垫圈GB97.1-12-200HV	2	
4	253630520906	Stent	支架	2	
5	910400200005	Washer GB96.1-12-200HV	大垫圈GB96.1-12-200HV	2	
6	253631020021	Bush $\Phi 20 \times \Phi 13 \times 74$	衬套 $\Phi 20 \times \Phi 13 \times 74$	1	
7	940500100019	Bush $\Phi 20 \times \Phi 13 \times 74$	复合套 $\Phi 20 \times \Phi 23 \times 20$ -SF-1	2	
8	910100300020	Bolt GB5782-M12x120-8.8	螺栓GB5783-M8x16-8.8	6	
9	910400500006	Washer GB93-8	弹簧垫圈GB93-8	10	
10	910400100006	Washer GB97.1-8-200HV	平垫圈GB97.1-8-200HV	10	
11	910400500008	Washer GB93-12	弹簧垫圈GB93-12	2	
12	910300100008	Nut GB6170-M12-10	螺母GB6170-M12-10	1	
13	253631020020	Pulley $\Phi 104 \times 76$	滑轮 $\Phi 104 \times 76$ (四联)	1	
14	910100100072	Bolt GB5782-M16x60-8.8	螺栓GB5782-M16x60-8.8	1	
15	910400100010	Washer GB97.1-16-200HV	平垫圈GB97.1-16-200HV	1	
16	253644520012	Middle cylinder chain baffle	中缸链条挡板	1	
17	253645220011	Cylinder head	缸头	2	
18	910100300023	Bolt GB5783-M8x25-8.8	螺栓GB5783-M8x25-8.8	2	
19	910100300027	Bolt GB5783-M8x45-8.8	螺栓GB5783-M8x45-8.8	2	
20	255028520035	Pipe press fixedly plank	管夹安装板	2	
21	255028520034	Rubber pipe lump	胶管固定块	4	
22	253630510001	Intermediate cylinder rubber tube transition	中缸胶管过渡架	1	
23	253644520004	Embrace hoop	抱箍	2	
24	910400100007	Washer GB97.1-10-200HV	平垫圈GB97.1-10-200HV	2	
25	910400500007	Washer GB93-10	弹簧垫圈GB93-10	2	
26	910100300036	Bolt GB5783-M10x25-8.8	螺栓GB5783-M10x25-8.8	1	
27	910100300050	Bolt GB5783-M12x30-8.8	螺栓GB5783-M12x30-8.8	1	
28	910100100048	Bolt GB5782-M12x50-8.8	螺栓GB5782-M12x50-8.8	1	
29	256844520021	Hose baffle	胶管挡板	1	
30	255030520020	Pulley $\Phi 120 \times 42$	滑轮 $\Phi 120 \times 42$ (双槽)	1	
31	255030520023	Bush	衬套1		

侧移器及管路安装(三级全自由)/Side shifter and pipeline installation(three stage full free)-32C



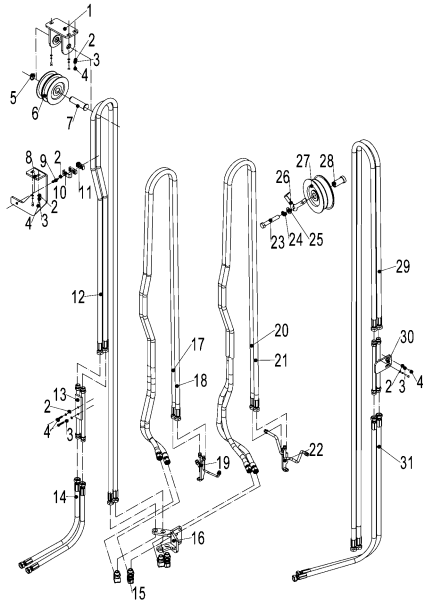
序号/NO	编码/SN	Name	名称	数量/QTY	备注/Remarks
32	251328520704	Hydraulic hose assembly 10-L2220-1SC-24°	液压管总成(直)10-L2220-1SC-24°	2	H=3600
32	253630520106	Hydraulic hose assembly 10-L2330-1SC-24°	液压管总成(直)10-L2330-1SC-24°	2	H=4000
32	251230520716	Hydraulic hose assembly 10-L2470-1SC-24°	液压管总成(直)10-L2470-1SC-24°	2	H=4350
32	251330520702	Hydraulic hose assembly 10-L2510-1SC-24°	液压管总成(直)10-L2510-1SC-24°	2	H=4500
32	251230520704	Hydraulic hose assembly 10-L2610-1SC-24°	液压管总成(直)10-L2610-1SC-24°	2	H=4800
32	253630520107	Hydraulic hose assembly 10-L2680-1SC-24°	液压管总成(直)10-L2680-1SC-24°	2	H=5000
32	251228520701	Hydraulic hose assembly 10-L2850-1SC-24°	液压管总成(直)10-L2850-1SC-24°	2	H=5500
32	253630520105	Hydraulic hose assembly 10-L3070-1SC-24°	液压管总成(直)10-L3070-1SC-24°	2	H=6000
32	253630520108	Hydraulic hose assembly 10-L3320-1SC-24°	液压管总成(直)10-L3320-1SC-24°	2	H=6500
33	251329020701	Hydraulic hose assembly 10-L2170-1SC-24°	液压管总成(直)10-L2170-1SC-24°	2	H=3600
33	251230520715	Hydraulic hose assembly 10-L2295-1SC-24°	液压管总成(直)10-L2295-1SC-24°	2	H=4000
33	251230520703	Hydraulic hose assembly 10-L2410-1SC-24°	液压管总成(直)10-L2410-1SC-24°	2	H=4350
33	251230520716	Hydraulic hose assembly 10-L2470-1SC-24°	液压管总成(直)10-L2470-1SC-24°	2	H=4500
33	253630520104	Hydraulic hose assembly 10-L2570-1SC-24°	液压管总成(直)10-L2570-1SC-24°	2	H=4800
33	251231020702	Hydraulic hose assembly 10-L2650-1SC-24°	液压管总成(直)10-L2650-1SC-24°	2	H=5000
33	253630520109	Hydraulic hose assembly 10-L2820-1SC-24°	液压管总成(直)10-L2820-1SC-24°	2	H=5500
33	282323520029	Hydraulic hose assembly 10-L3030-1SC-24°	液压管总成(直)10-L3030-1SC-24°	2	H=6000
33	253630520110	Hydraulic hose assembly 10-L3270-1SC-24°	液压管总成(直)10-L3270-1SC-24°	2	H=6500
34	253630520004	Single attached hose bracket	单附胶管支架	1	
35	950400600002	Joint 10-M16x1.5-M16x1.5-24°	接头(隔壁弯)10-M16x1.5-M16x1.5-24°	1	
36	253630510002	Hose mounting rack	胶管安装架	1	
37	253630520102	Hydraulic hose assembly 10-L2020-1SC-24°	液压管总成(直)10-L2020-1SC-24°	2	H=3600
37	253630520201	Hydraulic hose assembly 10-L2260-1SC-24°	液压管总成(直)10-L2260-1SC-24°	2	H=4000
37	251330520702	Hydraulic hose assembly 10-L2510-1SC-24°	液压管总成(直)10-L2510-1SC-24°	2	H=4350
37	251230520704	Hydraulic hose assembly 10-L2610-1SC-24°	液压管总成(直)10-L2610-1SC-24°	2	H=4500
37	251330520704	Hydraulic hose assembly 10-L2910-1SC-24°	液压管总成(直)10-L2910-1SC-24°	2	H=4800
37	251330520705	Hydraulic hose assembly 10-L3210-1SC-24°	液压管总成(直)10-L3210-1SC-24°	2	H=5000
37	251331020705	Hydraulic hose assembly 10-L3950-1SC-24°	液压管总成(直)10-L3950-1SC-24°	2	H=5500
37	253631020105	Hydraulic hose assembly 10-L4420-1SC-24°	液压管总成(直)10-L4420-1SC-24°	2	H=6000
37	283327520012	Hydraulic hose assembly 10-L4880-1SC-24°	液压管总成(直)10-L4880-1SC-24°	2	H=6500
38	251330510004	Hydraulic steel pipe welding (24°)	液压钢管焊台(24°)	1	

双附加管路(三级全自由)/DOUBLE ADDITIONAL TUBE(three stage full free)-32C



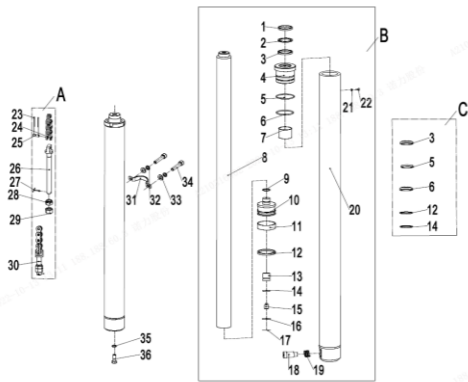
序号/NO	编码/SN	Name	名称	数量/QTY	备注/Remarks
1	255031010002	Pulley support welded 2	滑轮支架焊合2	1	
2	910400100006	Washer GB97.1-8-200HV	平垫圈GB97.1-8-200HV	4	
3	910400500006	Washer GB93-8	弹簧垫圈GB93-8	4	
4	910100300022	Bolt GB5783-M8x20-8.8	螺栓GB5783-M8x20-8.8	2	
5	910401300011	Circlip GB894.1-20	轴用弹性挡圈GB894.1-20	1	
6	255031020007	Pulley Φ90x22	滑轮Φ90x22(单槽)	2	
7	255031020004	Axle Φ20x70	带耳轴Φ20x70	1	
8	253631020901	Hose fixing plate	胶管固定板	1	
9	910100300025	Bolt GB5783-M8x35-8.8	螺栓GB5783-M8x35-8.8	4	
10	255028520035	Pipe press fixedly plank	安装板(管夹)	4	
11	255028520034	Hose fixing bloke	胶管固定块	8	
12	253630520111	Hydraulic hose assembly 10-L1630-1SC-24°	液压管总成(直)10-L1630-1SC-24°	2	H=3600
12	251230520711	Hydraulic hose assembly 10-L1870-1SC-24°	液压管总成(直)10-L1870-1SC-24°	2	H=4000
12	251230520714	Hydraulic hose assembly 10-L2120-1SC-24°	液压管总成(直)10-L2120-1SC-24°	2	H=4350
12	251328520704	Hydraulic hose assembly 10-L2220-1SC-24°	液压管总成(直)10-L2220-1SC-24°	2	H=4500
12	251328520705	Hydraulic hose assembly 10-L2530-1SC-24°	液压管总成(直)10-L2530-1SC-24°	2	H=4800
12	251230520705	Hydraulic hose assembly 10-L2810-1SC-24°	液压管总成(直)10-L2810-1SC-24°	2	H=5000
12	251331020704	Hydraulic hose assembly 10-L3550-1SC-24°	液压管总成(直)10-L3550-1SC-24°	2	H=5500
12	251228020003	Hydraulic hose assembly 10-L4050-1SC-24°	液压管总成(直)10-L4050-1SC-24°	2	H=6000
12	251227520006	Hydraulic hose assembly 10-L4500-1SC-24°	液压管总成(直)10-L4500-1SC-24°	2	H=6500
13	251331010002	Hydraulic steel pipe welding(24°)	过渡钢管总成(24°)	1	
14	253631020003	Hydraulic hose assembly 10-L630-1SC-24°	液压管总成(直)10-L630-1SC-24°	2	
15	950400600002	Joint (adjoining bend) 10-M16x1.5-M16x1.5-24°	接头(隔壁弯)10-M16x1.5-M16x1.5-24°	4	
16	253631010001	Hose mounting rack	胶管安装架	1	
17	253631020103	Hydraulic hose assembly 10-L2080-1SC-24°	液压管总成(直)10-L2080-1SC-24°	2	H=3600
17	251223520001	Hydraulic hose assembly 10-L2200-1SC-24°	液压管总成(直)10-L2200-1SC-24°	2	H=4000
17	253630520106	Hydraulic hose assembly 10-L2330-1SC-24°	液压管总成(直)10-L2330-1SC-24°	2	H=4350
17	253631020202	Hydraulic hose assembly 10-L2380-1SC-24°	液压管总成(直)10-L2380-1SC-24°	2	H=4500
17	251230520716	Hydraulic hose assembly 10-L2470-1SC-24°	液压管总成(直)10-L2470-1SC-24°	2	H=4800
17	253630520201	Hydraulic hose assembly 10-L2545-1SC-24°	液压管总成(直)10-L2545-1SC-24°	2	H=5000
17	251330520703	Hydraulic hose assembly 10-L2710-1SC-24°	液压管总成(直)10-L2710-1SC-24°	2	H=5500

双附加管路(三级全自由)/DOUBLE ADDITIONAL TUBE(three stage full free)-32C



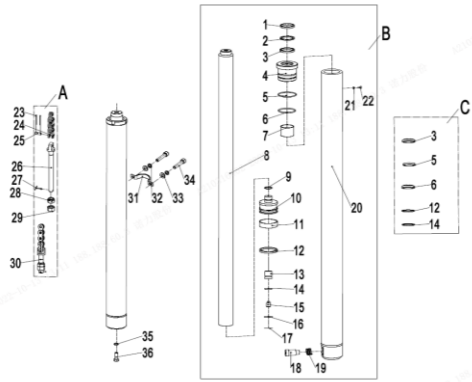
序号/NO	编码/SN	Name	名称	数量/QTY	备注/Remarks
17	251330520704	Hydraulic hose assembly 10-L2910-1SC-24°	液压管总成(直)10-L2910-1SC-24°	2	H=6000
17	251231020705	Hydraulic hose assembly 10-L3150-1SC-24°	液压管总成(直)10-L3150-1SC-24°	2	H=6500
18	251230520701	Hydraulic hose assembly 10-L2060-1SC-24°	液压管总成(直)10-L2060-1SC-24°	2	H=3600
18	251329020701	Hydraulic hose assembly 10-L2170-1SC-24°	液压管总成(直)10-L2170-1SC-24°	2	H=4000
18	251230520715	Hydraulic hose assembly 10-L2295-1SC-24°	液压管总成(直)10-L2295-1SC-24°	2	H=4350
18	251329020702	Hydraulic hose assembly 10-L2360-1SC-24°	液压管总成(直)10-L2360-1SC-24°	2	H=4500
18	253631020104	Hydraulic hose assembly 10-L2450-1SC-24°	液压管总成(直)10-L2450-1SC-24°	2	H=4800
18	251328520705	Hydraulic hose assembly 10-L2530-1SC-24°	液压管总成(直)10-L2530-1SC-24°	2	H=5000
18	251330520703	Hydraulic hose assembly 10-L2710-1SC-24°	液压管总成(直)10-L2710-1SC-24°	2	H=5500
18	251330520704	Hydraulic hose assembly 10-L2910-1SC-24°	液压管总成(直)10-L2910-1SC-24°	2	H=6000
18	251231020705	Hydraulic hose assembly 10-L3150-1SC-24°	液压管总成(直)10-L3150-1SC-24°	2	H=6500
19	253630520004	Single attached hose bracket	单附胶管支架	1	
20	251328520704	Hydraulic hose assembly 10-L2220-1SC-24°	液压管总成(直)10-L2220-1SC-24°	2	H=3600
20	253630520106	Hydraulic hose assembly 10-L2330-1SC-24°	液压管总成(直)10-L2330-1SC-24°	2	H=4000
20	251230520716	Hydraulic hose assembly 10-L2470-1SC-24°	液压管总成(直)10-L2470-1SC-24°	2	H=4350
20	251330520702	Hydraulic hose assembly 10-L2510-1SC-24°	液压管总成(直)10-L2510-1SC-24°	2	H=4500
20	251230520704	Hydraulic hose assembly 10-L2610-1SC-24°	液压管总成(直)10-L2610-1SC-24°	2	H=4800
20	253630520107	Hydraulic hose assembly 10-L2680-1SC-24°	液压管总成(直)10-L2680-1SC-24°	2	H=5000
20	251228520701	Hydraulic hose assembly 10-L2850-1SC-24°	液压管总成(直)10-L2850-1SC-24°	2	H=5500
20	253630520105	Hydraulic hose assembly 10-L3070-1SC-24°	液压管总成(直)10-L3070-1SC-24°	2	H=6000
20	253630520108	Hydraulic hose assembly 10-L3320-1SC-24°	液压管总成(直)10-L3320-1SC-24°	2	H=6500
27	253630520102	Hydraulic hose assembly 10-L2020-1SC-24°	液压管总成(直)10-L2020-1SC-24°	2	H=4000
27	253630520103	Hydraulic hose assembly 10-L2270-1SC-24°	液压管总成(直)10-L2270-1SC-24°	2	H=4350
27	251329020702	Hydraulic hose assembly 10-L2360-1SC-24°	液压管总成(直)10-L2360-1SC-24°	2	H=4500
27	251328520705	Hydraulic hose assembly 10-L2530-1SC-24°	液压管总成(直)10-L2530-1SC-24°	2	H=4800
27	251330520703	Hydraulic hose assembly 10-L2710-1SC-24°	液压管总成(直)10-L2710-1SC-24°	2	H=5000
27	253630520105	Hydraulic hose assembly 10-L3070-1SC-24°	液压管总成(直)10-L3070-1SC-24°	2	H=5500
27	251327520001	Hydraulic hose assembly 10-L3470-1SC-24°	液压管总成(直)10-L3470-1SC-24°	2	H=6000
27	282331020103	Hydraulic hose assembly 10-L3970-1SC-24°	液压管总成(直)10-L3970-1SC-24°	2	H=6500
28	251330510004	Hydraulic steel pipe welding (24°)	液压钢管焊合(24°)	1	
29	253630520102	Hydraulic hose assembly 10-L2020-1SC-24°	液压管总成(直)10-L2020-1SC-24°	2	H=3600

短起升油缸(三级全自由门架)/SHORT LIFTING CYLINDER (three stage full free) -32C



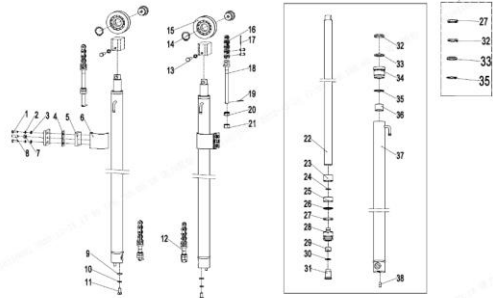
序号/NO	编码/SN	Name	名称	数量/Qty	备注/Remarks
A	255043510090	Lifting chain LH1623x37	起升链条LH1623x37	2	H=3600
A	255044510124	Lifting chain LH1623x45	起升链条LH1623x45	2	H=4000
A	255044010109	Lifting chain LH1623x51	起升链条LH1623x51	2	H=4350
A	255044510045	Lifting chain LH1623x53	起升链条LH1623x53	2	H=4500
A	255044010059	Lifting chain LH1623x57	起升链条LH1623x57	2	H=4700
A	255044010059	Lifting chain LH1623x57	起升链条LH1623x57	2	H=4800
A	255044510133	Lifting chain LH1623x59	起升链条LH1623x59	2	H=5000
A	256844014002	Lifting chain LH1623x65	起升链条LH1623x65	2	H=5400
A	256844014002	Lifting chain LH1623x65	起升链条LH1623x65	2	H=5500
A	255044510138	Lifting chain LH1623x73	起升链条LH1623x73	2	H=6000
A	255044010101	Lifting chain LH1623x77	起升链条LH1623x77	2	H=6500
B	253744518001	Short lifting cylinderΦ85xΦ60x622	油缸(M)Φ85xΦ60x622	1	H=3600
B	253744518002	Short lifting cylinderΦ85xΦ60x685	油缸(M)Φ85xΦ60x685	1	H=4000
B	253744518003	Short lifting cylinderΦ85xΦ60x748	油缸(M)Φ85xΦ60x748	1	H=4350
B	253744518004	Short lifting cylinderΦ85xΦ60x772	油缸(M)Φ85xΦ60x772	1	H=4500
B	253744518005	Short lifting cylinderΦ85xΦ60x805	油缸(M)Φ85xΦ60x805	1	H=4700
B	253744518006	Short lifting cylinderΦ85xΦ60x822	油缸(M)Φ85xΦ60x822	1	H=4800
B	253744518007	Short lifting cylinderΦ85xΦ60x879	油缸(M)Φ85xΦ60x879	1	H=5000
B	253744518008	Short lifting cylinderΦ85xΦ60x979	油缸(M)Φ85xΦ60x979	1	H=5400
B	253744518009	Short lifting cylinderΦ85xΦ60x995	油缸(M)Φ85xΦ60x995	1	H=5500
B	253744518010	Short lifting cylinderΦ85xΦ60x1121	油缸(M)Φ85xΦ60x1121	1	H=6000
B	253744518011	Short lifting cylinderΦ85xΦ60x1229	油缸(M)Φ85xΦ60x1229	1	H=6500
C	256198510005	Seal kits(middle cylinder)	密封件修理包(三级全自由中缸)	1	
1	▲	Dust ring 50x58x7/6.5	防尘圈50x58x7/6.5	1	
2	▲	Catch 50x60x3	挡片50x60x3	1	
3	▲	Seal ring 50x60x6	密封圈50x60x6	1	
4	▲	Glide sleeve	导向套	1	
5	▲	O ring D75X3.1	O型密封圈D75X3.1	1	
6	▲	O ring D75X3.1	O型密封圈D70x3.1	1	
7	▲	Bearing50x55x40	钢背轴承 50x55x40	1	
8	▲	HSG Piston rod	HSG活塞杆	1	

短起升油缸(三级全自由门架)/SHORT LIFTING CYLINDER (three stage full free) -32C



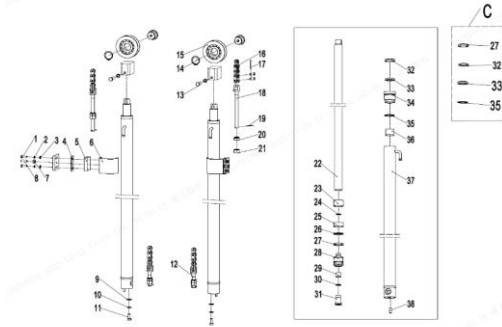
序号/NO	编码/SN	Name	名称	数量/QTY	备注/Remarks
9	▲	Piston assembly	挡圈	1	
10	▲	Support ring 65x70x20	支承环65x70x20	1	
11	▲	Seal ring 70x60x6	孔用密封圈70x60x6	1	
12	▲	Circlip	钢丝挡圈	1	
14	▲	O ring D15x2.4	O型密封圈D15x2.4	1	
15	▲	Valve plug	阀芯	1	
16	▲	Catch	挡片	1	
17	▲	Circlip 22(inport)	挡圈 22(进口型)	1	
18	▲	Slide valve	滑阀	1	
19	▲	Spring2.3x15x48.5	弹簧2.3x15x48.5	1	
20	▲	Cylinder	缸体	1	
21	▲	Spacer	垫片	1	
22	▲	Screw M5x5	螺钉M5x6	1	
23	910600600022	Split pin GB91-2.5x40	开口销GB91-2.5x40	2	
24	910900400014	LH1623 chain	板式链GB6074-LH1623	2	
25	255044020146	Φ9.5x25	销轴Φ9.5x25	2	
26	255044020157	Joint M18x1.5x217	链条螺栓M18x1.5x217	2	
27	910600600030	split pin3.2x30	开口销GB91-3.2x30	2	
28	255044020158	Nut M18x1.5	球面螺母M18x1.5	2	
29	910300400007	Nut M18x1.5-0.5	螺母GB6173-M18x1.5-05	2	
30	255044020156	Joint M18x1.5x102	链条螺栓M18x1.5x102	1	
31	253644520004	Hug the hoop	抱箍	1	
32	910400500006	Spring Washer GB93-8	弹簧垫圈GB93-8	2	
33	910300100006	Bolt GB6170-M8-10	螺母GB6170-M8-10	1	
34	910100300036	Joint GB5783-M10x25-8.8	螺栓GB5783-M10x25-8.8	2	
35	910400500008	SpringWasherGB93-12	弹簧垫圈GB93-12	1	
36	910100400009	BoltGB5786-M12x1.25x25-8.8	螺栓GB5786-M12x1.25x25-8.8	1	

起升油缸(三级全自由门架)/ LIFTING CYLINDER (three stage full free) -32C



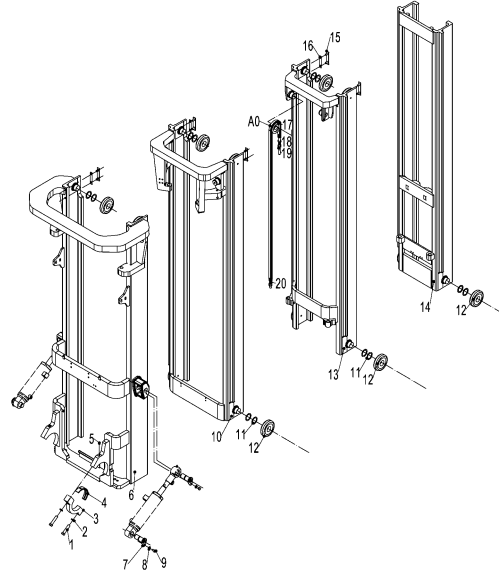
序号/NO	编码/SN	Name	名称	数量/Qty	备注/Remarks
A	253744516001	cylinderΦ56xΦ45x1458	油缸(L)Φ56xΦ45x1458	1	H=3600
A	253744516002	cylinderΦ56xΦ45x1583	油缸(L)Φ56xΦ45x1583	1	H=4000
A	253744516003	cylinderΦ56xΦ45x1708	油缸(L)Φ56xΦ45x1708	1	H=4350
A	253744516004	cylinderΦ56xΦ45x1758	油缸(L)Φ56xΦ45x1758	1	H=4500
A	253744516005	cylinderΦ56xΦ45x1823	油缸(L)Φ56xΦ45x1823	1	H=4700
A	253744516006	cylinderΦ56xΦ45x1858	油缸(L)Φ56xΦ45x1858	1	H=4800
A	253744516007	cylinderΦ56xΦ45x2001	油缸(L)Φ56xΦ45x2001	1	H=5000
A	253744516008	cylinderΦ56xΦ45x2201	油缸(L)Φ56xΦ45x2201	1	H=5400
A	253744516009	cylinderΦ56xΦ45x2235	油缸(L)Φ56xΦ45x2235	1	H=5500
A	253744516010	cylinderΦ56xΦ45x2468	油缸(L)Φ56xΦ45x2468	1	H=6000
A	253744516011	cylinderΦ56xΦ45x2701	油缸(L)Φ56xΦ45x2701	1	H=6500
B	253744517001	cylinderΦ56xΦ45x1458	油缸(R)Φ56xΦ45x1458	1	H=3600
B	253744517002	cylinderΦ56xΦ45x1583	油缸(R)Φ56xΦ45x1583	1	H=4000
B	253744517003	cylinderΦ56xΦ45x1708	油缸(R)Φ56xΦ45x1708	1	H=4350
B	253744517004	cylinderΦ56xΦ45x1758	油缸(R)Φ56xΦ45x1758	1	H=4500
B	253744517005	cylinderΦ56xΦ45x1823	油缸(R)Φ56xΦ45x1823	1	H=4700
B	253744517006	cylinderΦ56xΦ45x1858	油缸(R)Φ56xΦ45x1858	1	H=4800
B	253744517007	cylinderΦ56xΦ45x2001	油缸(R)Φ56xΦ45x2001	1	H=5000
B	253744517008	cylinderΦ56xΦ45x2201	油缸(R)Φ56xΦ45x2201	1	H=5400
B	253744517009	cylinderΦ56xΦ45x2235	油缸(R)Φ56xΦ45x2235	1	H=5500
B	253744517010	cylinderΦ56xΦ45x2468	油缸(R)Φ56xΦ45x2468	1	H=6000
B	253744517011	cylinderΦ56xΦ45x2701	油缸(R)Φ56xΦ45x2701	1	H=6500
C	256198510003	Seal kits(three stage full free lifting cylinder)	密封件修理包(三级全自由起升缸)	1	
D	255044510133	Lifting chain LH1623-59	起升链条LH1623-59	2	H=3600
D	256844014002	Lifting chain LH1623-65	起升链条LH1623-65	2	H=4000
D	255044510046	Lifting chain LH1623-69	起升链条LH1623-69	2	H=4350
D	255044510136	Lifting chain LH1623-71	起升链条LH1623-71	2	H=4500
D	255044510138	Lifting chain LH1623-73	起升链条LH1623-73	2	H=4700
D	255044010101	Lifting chain LH1623-75	起升链条LH1623-75	2	H=4800
D	255043510139	Lifting chain LH1623-77	起升链条LH1623-77	2	H=5000
D	255044010104	Lifting chain LH1623-83	起升链条LH1623-83	2	H=5400

起升油缸(三级全自由门架)/ LIFTING CYLINDER (three stage full free) -32C



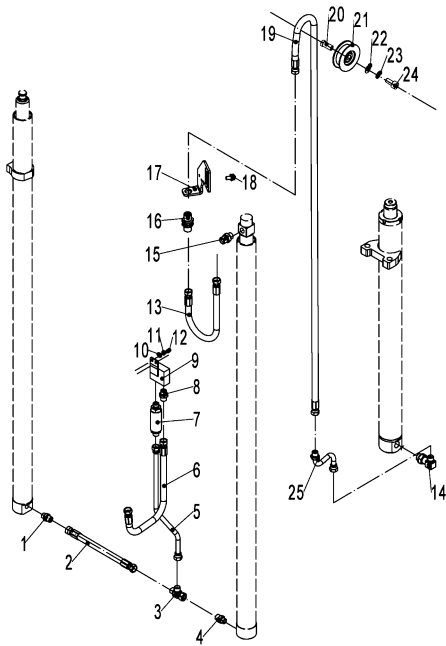
序号/NO	编码/SN	Name	名称	数量/QTY	备注/Remarks
D	255044510140	Lifting chain LH1623-85	起升链条LH1623-85	2	H=5500
D	253543510066	Lifting chain LH1623-93	起升链条LH1623-93	2	H=6000
D	255044510049	Lifting chain LH1623-103	起升链条LH1623-103	2	H=6500
1	910100300023	Bolt GB5783-M8x25-8.8	螺栓GB5783-M8x25-8.8	4	
2	910400500007	Washer GB93-10	弹簧垫圈GB93-10	4	
3	910400100007	Washer GB97.1-10-200HV	平垫圈GB97.1-10-200HV	4	
4	255044520099	Rubber pad	橡胶垫	2	
5	255044520097	Support block	支撑块	2	
6	255044520098	Blendboard	弯板	2	
7	941100100003	Nut GB6170-M10-10	螺母GB6170-M10-10	2	
8	910300100007	Screw M10x35-8.8	螺钉M10x35-8.8	2	
9	910400100008	Washer GB97.1-12-200HV	平垫圈GB97.1-12-200HV	2	
10	910400500008	Washer GB93-12	弹簧垫圈GB93-12	2	
11	910100400009	Bolt GB5786-M12x1.25x25-8.8	螺栓GB5786-M12x1.25x25-8.8	2	
12	255044020156	Joint M18x1.5x102	链条螺栓M18x1.5x102	2	
13	910100300035	Bolt GB5783-M10x20-8.8	螺栓GB5783-M10x20-8.8	2	
14	910401300020	Circlip GB894.1-40	轴用弹性挡圈GB894.1-40	2	
15	940200500005	Chain wheel bearing 780708K-Φ110xΦ40x27	链轮轴承780708K-Φ110xΦ40x27	2	
16	910900400014	LH1623chain	板式链GB6074-LH1623	2	
17	910600600022	Split pin 2.5x40	开口销2.5x40	2	
18	255044020157	Joint M18x1.5x217	链条螺栓M18x1.5x217	2	
19	910600600030	Split pin 3.2x30	开口销GB91-3.2x30	2	
20	255044020158	Nut M18x1.5	球面螺母M18x1.5	2	
21	910300400007	Nut M18x1.5	螺母GB6173-M18x1.5-05	2	
22	▲	Piston rod	活塞杆	1	
23	▲	Adjusting bushing 40.5x49xL2	调整套40.5x49xL2	1	
24	▲	Circlip Φ24x2	钢丝挡圈Φ24x2	1	
25	▲	Bearing 56x20x2.5	支承56x20x2.5	1	
26	▲	Catch 56x45x3	挡片56x44x3	1	
27	▲	Seal ring 56x45x6	孔用密封圈	1	
28	▲	Piston	活塞	1	

253698501041门架 (四级门架)/Mast (four stage full free lift)



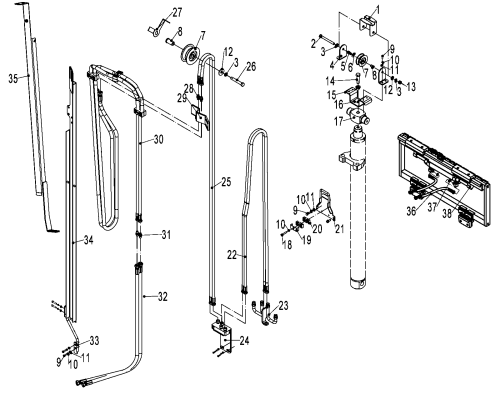
序号/NO	编码/SN	Name	名称	数量/QTY	备注/Remarks
1	910100200012	Bolt GB5785-M14x1.5x70-8.8	螺栓GB5785-M14x1.5x70-8.8	4	
2	910400500009	Washer GB93-14	弹簧垫圈GB93-14	4	
3	256844021014	Bearing cover	支座盖	2	
4	254144020063	Bearing bush	轴瓦	2	
5	911200100004	Oil Cup JB7940.1-M10x1	油杯JB7940.1-M10x1	2	
6	253645211021	Outer mast 6100	外门架焊合(6100)	1	H=6100
6	253645211022	Outer mast 6600	外门架焊合(6600)	1	H=6600
6	253645211023	Outer mast 7000	外门架焊合(7000)	1	H=7000
7	255044010057	Axle Φ30x82	带耳轴 Φ30x82	4	
8	910400500007	Washer GB93-10	弹簧垫圈GB93-10	4	
9	910100300035	Bolt GB5783-M10x20-8.8	螺栓GB5783-M10x20-8.8	4	
10	253645213001	Middle mast 6100	中门架焊合(1) 6100	1	H=6100
10	253645213002	Middle mast 6600	中门架焊合(1) 6600	1	H=6600
10	253645213003	Middle mast 7000	中门架焊合(1) 7000	1	H=7000
11	253645220001	Washer 0.2	主滚轮调整圈T0.2	12	
11	253645220002	Washer 0.5	主滚轮调整圈T0.5	12	
11	253645220003	Washer 1	主滚轮调整圈T1	12	
12	940200100053	Roller Φ117.5xΦ40x28	主滚轮 Φ117.5xΦ40x28	12	选配
12	940200100054	Roller Φ117.7xΦ40x28	主滚轮 Φ117.7xΦ40x28	12	
12	940200100055	Roller Φ117.2xΦ40x28	主滚轮 Φ117.2xΦ40x28	12	
13	253645214001	Middle mast 6100	中门架焊合(2) 6100	1	H=6100
13	253645214002	Middle mast 6600	中门架焊合(2) 6600	1	H=6600
13	253645214003	Middle mast 7000	中门架焊合(2) 7000	1	H=7000
14	253645212001	Inner mast 6100	内门架焊合 6100	1	H=6100
14	253645212002	Inner mast 6600	内门架焊合 6600	1	H=6600
14	253645212003	Inner mast 7000	内门架焊合 7000	1	H=7000
15	253644520011	Base plate	垫板	6	
16	253644520132	Adjusting pad t=0.2	调整垫片t=0.2	6	
16	253644520133	Adjusting pad t=0.5	调整垫片t=0.5	6	
16	253644520134	Adjusting pad t=0.8	调整垫片t=0.8	6	

253698501042门架起升管路 (四级门架)/Mast lifting pipeline(four stage full free lift)



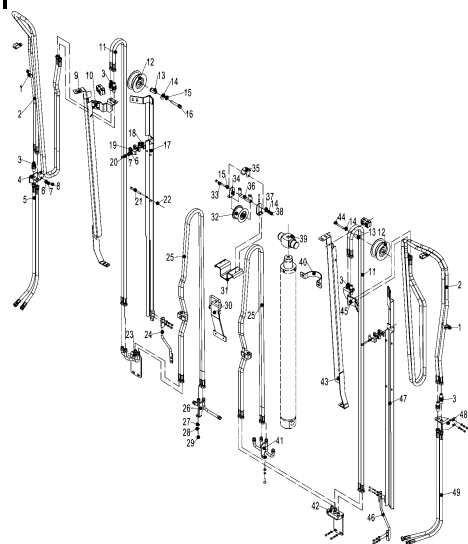
序号/NO	编码/SN	Name	名称	数量/QTY	备注/Remarks
1	251223520122	Connector 12-M20x1.5-M22x1.5-24°	接头(直)12-M20x1.5-M22x1.5-24°	1	
2	253644529001	Hydraulic hose assembly 10-L370-1SC-24	液压管总成(直)10-L370-1SC-24°	1	
3	950400100002	Connector 12-2xM16x1.5-24°	接头(转接直)12-2xM16x1.5-24°	1	
4	256898520001	explosion-proof valve	防爆阀	1	
5	253645219004	Three through the transition steel pip	三通过渡钢管焊合	1	
6	253644529004	Hydraulic hose assembly (135°) 15-L850	液压管总成(135°) 15-L850-2SC-24° (带钢丝)	1	
7	950700300003	Speed limit valve XSF-F16-60	限速阀XSF-F16L-60	1	
8	255023520030	Joint 12-2xM22x1.5-60°	接头(直)12-2xM22x1.5-60°	1	
9	253645219002	Three joint welding	三通焊合(四级)	1	
10	910400100006	Washer GB97.1-8-200HV	平垫圈GB97.1-8-200HV	2	
11	910400500006	Washer GB93-8	弹簧垫圈GB93-8	2	
12	910100100019	Bolt GB5782-M8x20-8.8	螺栓GB5782-M8x20-8.8	2	
13	253644529002	Hydraulic hose assembly (90°) 15-L550	液压管总成(90°) 15-L550-2SC-24°	1	
14	251244529002	Joint 12-M27x2-M22x1.5-24°	接头(锁定弯)12-M27x2-M22x1.5-24°	1	
15	251223520030	Joint 15-M22x1.5-M22x1.5-24°	接头(直)15-M22x1.5-M22x1.5-24°	1	
16	950400500006	Joint 15-M22x1.5-M22x1.5-24°	接头(隔壁直)15-M22x1.5-M22x1.5-24°	1	
17	253645229001	Joint over board	接头过板	1	
18	910100300023	Bolt GB5782-M8x25-8.8	螺栓GB5782-M8x25-8.8	2	
19	253644519301	Hydraulic hose assembly 15-L1920-2SC-2	液压管总成(直)15-L1920-2SC-24°	1	H=6100
19	253645219302	Hydraulic hose assembly 15-L2180-2SC-2	液压管总成(直)15-L2180-2SC-24°	1	H=6600
19	253645219303	Hydraulic hose assembly 15-L2500-2SC-2	液压管总成(直)15-L2500-2SC-24°	1	H=7000
20	255044520081	Bush Φ20XΦ13x33	衬套Φ20XΦ13x33	1	
21	255044520096	Pulley Φ120x36 (Single)	滑轮Φ120x36(单槽)	1	
22	910400100008	Washer GB97.1-12-200HV	平垫圈GB97.1-12-200HV	1	
23	910400500008	Washer GB93-12	弹簧垫圈GB93-12	1	
24	910100300054	Bolt GB5783-M12x50-8.8	螺栓GB5783-M12x50-8.8	1	
25	253645219003	Welding of intermediate cylinder trans	中缸过渡钢管焊合	1	

253698501044侧移器及管路安装(四级门架)/Side shifter and pipeline installation(four stage full free lift)



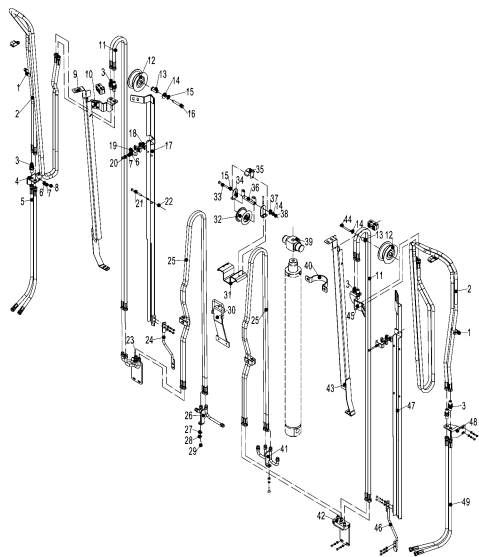
序号/NO	编码/SN	Name	名称	数量/QTY	备注/Remarks
1	253630520904	Middle cylinder rubber tube cover	中缸胶管护罩	1	
2	910100100060	Bolt GB5782-M12X120-8.8	螺栓GB5782-M12x120-8.8	1	
3	910400500008	Spring washers GB93-12	弹簧垫圈GB93-12	3	
4	253630520906	Stent	支架	2	
5	254130520016	bush $\Phi 20x \phi 13x43$	衬套 $\Phi 20x \Phi 13x43$	1	
6	910400200005	Large washers GB96.1-12-200HV	大垫圈GB96.1-12-200HV	2	
7	251127520001	Pulley $\phi 110x42$ (double groove)	滑轮 $\phi 110x42$ (双槽)	2	
8	255044520081	bush $\Phi 20x \phi 13x33$	衬套 $\Phi 20x \Phi 13x33$	2	
9	910100300020	Bolt GB5783-M8x16-8.8	螺栓GB5783-M8x16-8.8	6	
10	910400500006	Spring washers GB93-8	弹簧垫圈GB93-8	6	
11	910400100006	Plain washers GB97.1-8-200HV	平垫圈GB97.1-8-200HV	6	
12	910400100008	Plain washers GB97.1-12-200HV	平垫圈GB97.1-12-200HV	3	
13	910300100008	Nuts GB6170-M12-10	螺母GB6170-M12-10	1	
14	910100200016	Bolt GB5785-M16x1.5x70-8.8	螺栓GB5785-M16x1.5x70-8.8	1	
15	910400500010	Spring washers GB93-16	弹簧垫圈GB93-16	1	
16	253645220012	Middle cylinder chain baffle	中缸链条挡板	1	
17	253645220011	Cylinder head	缸头	1	
18	910100300025	Bolt GB5783-M8x35-8.8	螺栓GB5783-M8x35-8.8	4	
19	255028520035	Pipe clamp mounting plate	管夹安装板	4	
20	255028520034	Rubber tube fixing block	胶管固定块	8	
21	253630510001	Intermediate cylinder rubber tube tran	中缸胶管过渡架	1	
22	251328520704	Hydraulic hose assembly 10-L2220-1SC-2	液压管总成(直)10-L2220-1SC-24°	2	H=6100
22	251329020702	Hydraulic hose assembly 10-L2360-1SC-2	液压管总成(直)10-L2360-1SC-24°	2	H=6600
22	251330520702	Hydraulic hose assembly 10-L2510-1SC-2	液压管总成(直)10-L2510-1SC-24°	2	H=7000
23	253631120001	Single attached hose bracket (24°)	单附胶管支架(24°)	1	
24	253631110003	Joint body	接头体	1	
25	251230520712	Hydraulic hose assembly 10-L1920-1SC-2	液压管总成(直)10-L1920-1SC-24°	2	H=6100
25	211544520018	Hydraulic hose assembly 10-L2050-1SC-2	液压管总成(直)10-L2050-1SC-24°	2	H=6600
25	251328520704	Hydraulic hose assembly 10-L2220-1SC-2	液压管总成(直)10-L2220-1SC-24°	2	H=7000
26	910100100054	Bolt GB5782-M12x80-8.8	螺栓GB5782-M12x80-8.8	1	
27	256844520021	Hose baffle	胶管挡板	1	

双附加管路(四级门架)/DOUBLE ADDITIONAL TUBE((four stage full free lift)



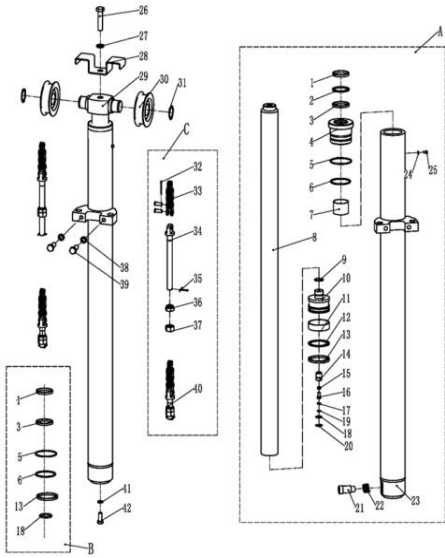
序号/NO	编码/SN	Name	名称	数量/QTY	备注/Remarks
1	951000100004	Hose Clamp 26	管夹YGE包胶26	4	
2	251230520704	Hydraulic hose assembly 10-L2610-1SC-2	液压管总成(直)10-L2610-1SC-24°	4	H=6100
2	253631020205	Hydraulic hose assembly 10-L2970-1SC-2	液压管总成(直)10-L2970-1SC-24°	4	H=6600
2	251231020706	Hydraulic hose assembly 10-L3450-1SC-2	液压管总成(直)10-L3450-1SC-24°	4	H=7000
3	950400500006	Joint 15-M22x1.5-M22x1.5-24°	接头(隔壁直)15-M22x1.5-M22x1.5-24°	8	
4	253631320005	Transitional mounting plate	过渡安装板	1	
5	253631320101	Hydraulic hose assembly 10-L1500-1SC-2	液压管总成(直)10-L1500-1SC-24°	2	
6	910400100006	Plain washers GB97.1-8-200HV	平垫圈GB97.1-8-200HV	23	
7	910400500006	Spring washers GB93-8	弹簧垫圈GB93-8	23	
8	910100300020	Bolt GB5783-M8x16-8.8	螺栓GB5783-M8x16-8.8	20	
9	253631310701	External guide groove welding 6100	外导槽焊合6100	1	H=6100
9	253631310702	External guide groove welding 6600	外导槽焊合6600	1	H=6600
9	253631310703	External guide groove welding 7000	外导槽焊合7000	1	H=7000
10	253631320004	Joint Transition Plate	接头过渡板	1	
11	253631120101	Hydraulic hose assembly 10-L1920-1SC-2	液压管总成(直)10-L1850-1SC-24°	4	H=6100
11	253631120102	Hydraulic hose assembly 10-L2050-1SC-2	液压管总成(直)10-L2050-1SC-24°	4	H=6600
11	251228520702	Hydraulic hose assembly 10-L2220-1SC-2	液压管总成(直)10-L2220-1SC-24°	4	H=7000
12	251127520001	Pulley Φ110x42(double groove)	滑轮Φ110x42(双槽)	2	
13	255044520081	bush Φ20x Φ13x33	衬套Φ20XΦ13x33	2	
14	910400200005	Large washers GB96.1-12-200HV	大垫圈GB96.1-12-200HV	6	
15	910400500008	Spring washers GB93-12	弹簧垫圈GB93-12	3	
16	910100100054	Bolt GB5782-M12x80-8.8	螺栓GB5782-M12x80-8.8	1	
17	253631310704	Internal Guide Groove Welding 6100	内导槽焊合6100	1	H=6100
17	253631310705	Internal Guide Groove Welding 6600	内导槽焊合6600	1	H=6600
17	253631310706	Internal Guide Groove Welding 7000	内导槽焊合7000	1	H=7000
18	255028520034	Rubber tube fixing block	胶管固定块	12	
19	255028520035	Pipe clamp mounting plate	管夹安装板	6	
20	910100300027	Bolt GB5783-M8x45-8.8	螺栓GB5783-M8x45-8.8	6	
21	910100300018	Bolt GB5783-M6x60-8.8	螺栓GB5783-M6x60-8.8	4	
22	910300500003	Nut GB889.1-M6-10	螺母GB889.1-M6-10	4	
23	253631310004	Hydraulic steel pipe welding (24°)	液压钢管焊合(四联24°)	1	

双附加管路(四级门架)/DOUBLE ADDITIONAL TUBE((four stage full free lift)



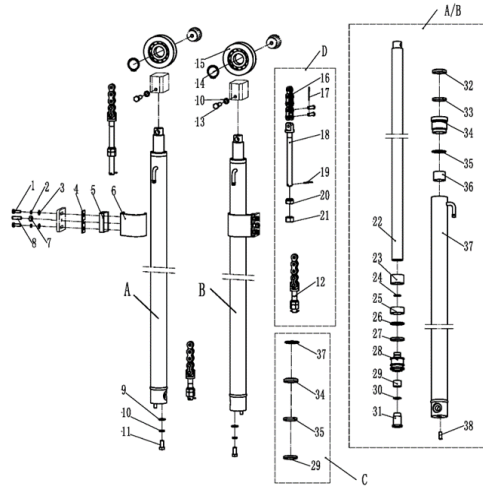
序号/NO	编码/SN	Name	名称	数量/QTY	备注/Remarks
24	253631310001	Internal guide groove (left) connectin	内导槽 (左) 连接杆	1	
25	251328520704	Hydraulic hose assembly 10-L2220-1SC-2	液压管总成(直)10-L2220-1SC-24°	4	H=6100
25	251329020702	Hydraulic hose assembly 10-L2360-1SC-2	液压管总成(直)10-L2360-1SC-24°	4	H=6600
25	251330520702	Hydraulic hose assembly 10-L2510-1SC-2	液压管总成(直)10-L2510-1SC-24°	4	H=7000
26	253631310002	Double attached hose bracket (24°)	双附胶管支架(24°)	1	
27	910300100006	Nut GB6170-M8-10	螺母GB6170-M8-10	2	
28	910100300025	Bolt GB5783-M8x35-8.8	螺栓GB5783-M8x35-8.8	2	
29	253631310003	Intermediate cylinder rubber tube tran	中缸胶管固定架	1	
30	253645220012	Middle cylinder chain baffle	中缸链条挡板	1	
31	253631020020	Pulley Φ104x76	滑轮Φ104x76(四联)	1	
32	910100100060	Bolt GB5782-M12x120-8.8	螺栓GB5782-M12x120-8.8	1	
33	253630520906	Stent	支架	2	
34	253630520904	Middle cylinder rubber tube cover	中缸胶管护罩	1	
35	253631020021	Bush Φ20xΦ13x73	衬套Φ20xΦ13x73	1	
36	910400100008	Flat Washer GB97.1-12-200HV	平垫圈GB97.1-12-200HV	2	
37	910300100008	Nut GB6170-M12-10	螺母GB6170-M12-10	1	
38	253645220011	Cylinder head	缸头	1	
39	253644520004	Embrace hoop	抱箍	1	
40	253631101002	Single attached hose bracket (24°)	单附胶管支架(24°)	1	
41	25363110003	Joint body	接头体	1	
42	253631110701	External guide groove welding 6100	外导槽焊合6100	1	H=6100
42	253631110702	External guide groove welding 6600	外导槽焊合6600	1	H=6600
42	253631110703	External guide groove welding 7000	外导槽焊合7000	1	H=7000
43	910100100059	Bolt GB5782-M12x110-8.8	螺栓GB5782-M12x110-8.8	1	
44	253631120002	Joint Transition Plate	接头过渡板	1	
45	253631110001	Internal guide groove (right) connecti	内导槽 (右) 连接杆	1	
46	253631110704	Internal Guide Groove Welding 6100	内导槽焊合6100	1	H=6100
46	253631110705	Internal Guide Groove Welding 6600	内导槽焊合6600	1	H=6600
46	253631110706	Internal Guide Groove Welding 7000	内导槽焊合7000	1	H=7000
47	253631120005	Transitional mounting plate	过渡安装板	1	
48	251230520002	Hydraulic hose assembly 10-1260-1SC-24	液压管总成(直)10-L1260-1SC-24°	2	

253698501045短起升油缸(四级全自由门架)/SHORT LIFTING CYLINDER (four stage full free lift)



序号/NO	编码/SN	Name	名称	数量/QTY	备注/Remarks
A	253645218001	Short lifting cylinder $\Phi 75x\Phi 50x830$	油缸(M) $\Phi 75x\Phi 50x830$	1	H=6100
A	253645218002	Short lifting cylinder $\Phi 75x\Phi 50x895$	油缸(M) $\Phi 75x\Phi 50x895$	1	H=6600
A	253645218003	Short lifting cylinder $\Phi 75x\Phi 50x975$	油缸(M) $\Phi 75x\Phi 50x975$	1	H=7000
B	255098510002	Seal kits(middle cylinder)	密封件修理包(三级全自由中缸)	1	
C	255044010101	Lifting chain LH1623 \times 77	起升链条LH1623 \times 77	2	H=6100
C	255043510139	Lifting chain LH1623 \times 79	起升链条LH1623 \times 79	2	H=6600
C	255044510137	Lifting chain LH1623 \times 81	起升链条LH1623 \times 81	2	H=7000
1	▲	Dust ring 50x58x7/6.5	防尘圈50x58x7/6.5	1	
2	▲	Catch 50 \times 60 \times 3	挡片50x60x3	1	
3	▲	Seal ring 50 \times 60 \times 6	密封圈50x60x6	1	
4	▲	Glide sleeve	导向套	1	
5	▲	O ring D75X3.1	O型密封圈D75X3.1	1	
6	▲	O ring D75X3.1	O型密封圈D70x3.1	1	
7	▲	Bearing50x55x40	钢背轴承 50x55x40	1	
8	▲	HSG Piston rod	HSG活塞杆	1	
9	▲	Circlip	钢丝挡圈	1	
10	▲	Piston assembly	活塞总成	1	
11	▲	Support ring 75x20x2.5	支承环75x20x2.5	1	
12	▲	Support ring 75x65x3	支承环75x65x3	1	
13	▲	Seal ring 75x65x6	孔用密封圈	1	
14	▲	Valve cover	阀套	1	
15	▲	Spring	弹簧	1	
16	▲	Valve plug	阀芯	1	
17	▲	Catch	挡片	1	
18	▲	O ring D20x2.4	O型密封圈	1	
19	▲	Circlip 12	孔用弹性挡圈12	1	
20	▲	Circlip 22	孔用弹性挡圈22	1	
21	▲	Slide valve	滑阀	1	
22	▲	Spring2.3x15x48.5	弹簧2.3x15x48.5	1	
23	▲	Cylinder	缸体	1	
24	▲	Spacer	垫片	1	

253698501046起升油缸(四级全自由门架)/ LIFTING CYLINDER (four stage full free lift)



序号/NO	编码/SN	Name	名称	数量/QTY	备注/Remarks
A	253645216001	cylinder Φ60xΦ50x1475	油缸(L)Φ60xΦ50x1475	1	H=6100
A	253645216002	cylinder Φ60xΦ50x1600	油缸(L)Φ60xΦ50x1600	1	H=6600
A	253645216003	cylinder Φ60xΦ50x1680	油缸(L)Φ60xΦ50x1680	1	H=7000
B	253645217001	cylinder Φ60xΦ50x1475	油缸(R)Φ60xΦ50x1475	1	H=6100
B	253645217002	cylinder Φ60xΦ50x1600	油缸(R)Φ60xΦ50x1600	1	H=6600
B	253645217003	cylinder Φ60xΦ50x1680	油缸(R)Φ60xΦ50x1680	1	H=7000
C	253698510001	Seal kits (lifting cylinder)	密封件修理包(25-32C四级边缸)	2	
D	254043510060	Lifting chain LH1634-75	起升链条LH1634-75	2	H=6100
D	256144014006	Lifting chain LH1634-79	起升链条LH1634-79	2	H=6600
D	256144014007	Lifting chain LH1634-85	起升链条LH1634-85	2	H=7000
1	910100300023	Bolt GB5783-M8x25-8.8	螺栓GB5783-M8x25-8.8	4	
2	910400500007	Washer GB93-10	弹簧垫圈GB93-10	4	
3	910400100007	Washer GB97.1-10-200HV	平垫圈GB97.1-10-200HV	4	
4	255044520099	Rubber pad	橡胶垫	2	
5	255044520097	Support block	支撑块	2	
6	255044520098	Blendboard	弯板	2	
7	941100100003	Nut GB6170-M10-10	螺母GB6170-M10-10	2	
8	910300100007	Screw M10x35-8.8	螺钉M10x35-8.8	2	
9	910400100008	Washer GB97.1-12-200HV	平垫圈GB97.1-12-200HV	2	
10	910400500008	Washer GB93-12	弹簧垫圈GB93-12	2	
11	910100400009	Bolt GB5786-M12x1.25x25-8.8	螺栓GB5786-M12x1.25x25-8.8	2	
12	255044020156	Joint M18x1.5x102	链条螺栓M18x1.5x102	2	
13	910100300035	Bolt GB5783-M10x20-8.8	螺栓GB5783-M10x20-8.8	2	
14	910401300020	Circlip GB894.1-40	轴用弹性挡圈GB894.1-40	2	
15	940200500005	Chain wheel bearing 780708K-Φ110xΦ40	链轮轴承780708K-Φ110xΦ40x27	2	
16	910900400014	LH1623chain	板式链GB6074-LH1623	2	
17	910600600022	Split pin 2.5x40	开口销2.5x40	2	
18	255044020157	Joint M18x1.5x217	链条螺栓M18x1.5x217	2	
19	910600600030	Split pin 3.2x30	开口销GB91-3.2x30	2	
20	255044020158	Nut M18x1.5	球面螺母M18x1.5	2	
21	910300400007	Nut M18x1.5	螺母GB6173-M18x1.5-05	2	

